



NATIONAL CENTER OF HEALTH INFORMATICS

Annual Bulgaria

PUBLIC HEALTH STATISTICS

2010

POPULATION AND VITAL STATISTICS
MORBIDITY AND MORTALITY BY CAUSES
HEALTH FACILITIES
MEDICAL PERSONNEL
ACTIVITIES OF THE HEALTH FACILITIES
ECONOMICAL INDICATORS
REVIEW BY REGIONS
INTERNATIONAL REVIEW

Sofia, 2010

PUBLIC HEALTH STATISTICS, Bulgaria 2010, Annual

ISSN 1310–2931

Editors *Christian Griva, Krasimira Dikova*

Publish *National center of health informatics*

Sofia, 2010

Print *National center of health informatics*

Circulatuion 60

CONTENTS

I. POPULATION AND VITAL STATISTICS

1. Population on 31.XII.	7
2. Population by age on 31.XII.2009	8
3. Age structure of the population	9
4. Live births, deaths and natural growth	10
5. Births and abortions	12
6. Age specific fertility rates	12
7. Infant mortality	13
8. Perinatal, neonatal and postneonatal infant mortality	13
9. Stillbirths and infant deaths under 1 year	16
10. Mortality by age groups	17
11. Life expectancy in Republic of Bulgaria	17

II. MORBIDITY AND MORTALITY BY CAUSES

1. Registered cases of certain infectious diseases subject to obligatory reporting	18
2. Registered cases of active tuberculosis	19
3. Registered cases of malignant neoplasms	20
4. Registered cases of malignant neoplasms by localization	22
5. Registered cases of some venereal and skin infections	23
6. Patients under observation of psychiatric facilities, wards and consultations by type of disease	24
7. Hospitalized patients (discharged and deceased) in hospitals by age	25
8. Hospitalized patients (discharged and deceased) in hospitals by classes of ICD-10 in 2009	26
9. Hospitalized patients (discharged and deceased) in hospitals 0-17 years of age by classes of ICD-10 in 2009	27
10. Hospitalized patients (discharged and deceased) in hospitals 18-64 years of age by classes of ICD-10 in 2009	28
11. Hospitalized patients (discharged and deceased) in hospitals over 65 years of age by classes of ICD-10 in 2009	29
12. Primary disability of persons over 16 years of age	30
13. Primary disability of persons under 16 years of age	31

14. Primary disability of persons over 16 years of age by class of disease and loss of capacity to work in 2009	32
15. Primary disability of persons under 16 years of age by class of disease and loss of capacity in 2009	33
16. Mortality by causes in 2009	34
III. HEALTH FACILITIES	
1. Health facilities and hospital beds in 2009	36
2. Beds in hospitals on 31.XII.2009 by type	38
3. Beds in hospitals and prophylactic centers on 31.XII.2009 by type	40
IV. MEDICAL PERSONNEL	
1. Medical personnel.....	41
2. Physicians by speciality	43
V. ACTIVITIES OF THE HEALTH FACILITIES	
1. Activities of the inpatient wards of the hospital health care facilities in 2009	44
2. Utilization, turnover and average length of stay in health care facilities in 2008 by type of beds	46
3. Women in childbirth served at inpatient healthcare facilities	48
4. Premature, stillborn and deceased babies before their discharge from inpatient healthcare facilities	49
5. Made abortions in health facilities during 2009 by age group and type of abortion	50
6. Medical abortions in health facilities	51
7. Persons served by calls attended and ambulatory examinations in need of urgent medical care in the centers for urgent medical care	51
8. Number and type of surgeries of patients, discharged from hospitals in 2009	52
9. Number and type of surgeries of patients, discharged from hospitals in 2009 by type of healthcare facility	53
VI. ECONOMICAL INDICATORS OF THE HEALTH FACILITIES FOR 2009	55

VII. REVIEW BY REGIONS

1. Population on 31.XII.2009	56
2. Live births in 2009	58
3. Deaths in 2009	59
4. Natural growth of population in 2009	60
5. Infant mortality in 2009	61
6. Registered cases of certain infectious diseases subject to obligatory reporting in 2009	62
7. Registered cases of active tuberculosis in 2009	64
8. Registered cases of malignant neoplasms in 2009	65
9. Registered cases of some venereal and skin infections in 2009	66
10. Patients under observation of psychiatric facilities, wards and consultations by type of disease on 31.12.2009	67
11. Hospitalized patients (discharged and deceased) in Hospitals in 2009	69
12. Primary disability of persons in 2009	70
13. Beds in hospitals on 31.XII.2009	71
14. Beds in hospitals and prophylactic centers on 31.XII.2009 by type	72
15. Medical personnel in health facilities on 31.XII.2009	74
16. Persons served by the centers for urgent medical care in 2009	76
17. Childbirth care at inpatient healthcare facilities during 2009	77
18. Surgical patients, discharged from hospitals in 2009	78

VIII. INTERNATIONAL REVIEW

1. Birth rate, death rate and natural growth	79
2. Infant mortality rate	80
3. Medical personnel and hospital beds	81

Main Health-demographic Indicators for 2009

Population on 31.12.2009	7 563 710
Age structure of the population:	
0-17 years of age	16.7%
18-64 years of age	65.8%
over 65 years of age	17.5%
Crude birth rate	10.7‰
Crude death rate	14.2‰
Infant mortality	9.0‰
Perinatal mortality	11.3‰
Neonatal mortality	5.4‰
Post neonatal mortality	3.6‰
Life expectancy at birth (<i>years</i>)	73.43
male	69.90
female	77.08
New cases of active tuberculosis	33.6‰‰‰
New cases of malignant neoplasms	438.3‰‰‰
Hospitalized patient	25825.5‰‰‰
0-17 years of age	25526.1‰‰‰
18-64 years of age	21189.7‰‰‰
over 65 years of age	43590.9‰‰‰
Primary disability of persons over 16 years of age	10.7‰
Primary disability of persons under 16 years of age	3.3‰
Hospitals (<i>number</i>)	306
Beds in hospitals (<i>number</i>)	45 906
Physicians (<i>number</i>)	27 988
Auxiliary medical personnel (<i>number</i>)	48 099
Premature live births (<i>per 100 live births</i>)	8.5%
Premature stillbirths (<i>per 100 stillbirths</i>)	64.7%
Persons served in need of urgent medical care	2 538 420
Surgeries of patients discharged from hospitals	522 832

I. POPULATION AND VITAL STATISTICS

1. Population on 31.XII.¹⁾

<i>Year</i>	<i>Total</i>	<i>Male</i>	<i>Female</i>	<i>Urban</i>	<i>Rural</i>
Number (thous.)					
1946	7029.3	3516.7	3512.6	1735.2	5294.1
1956	7613.7	3799.4	3814.3	2556.1	5057.6
1960	7905.5	3946.9	3958.6	3005.0	4900.5
1970	8514.9	4256.6	4258.3	4509.8	4005.1
1980	8876.6	4421.7	4454.9	5546.0	3330.6
1990	8669.3	4270.0	4399.3	5817.9	2851.4
1995	8384.7	4103.4	4281.3	5688.4	2696.3
2000	8149.5	3967.4	4182.1	5576.9	2572.6
2005	7718.8	3743.4	3975.4	5416.6	2302.2
2007	7640.2	3699.7	3940.5	5403.2	2237.0
2008	7606.6	3681.3	3925.3	5407.1	2199.5
2009	7563.7	3659.3	3904.4	5401.2	2162.5
Percentage (%)					
1946	100.0	50.0	50.0	24.7	75.3
1956	100.0	49.9	50.1	33.6	66.4
1960	100.0	49.9	50.1	38.0	62.0
1970	100.0	50.0	50.0	53.0	47.0
1980	100.0	49.8	50.2	62.5	37.5
1990	100.0	49.3	50.7	67.1	32.9
1995	100.0	48.9	51.1	67.8	32.2
2000	100.0	48.7	51.3	68.4	31.6
2005	100.0	48.5	51.5	70.2	29.8
2007	100.0	48.4	51.6	70.7	29.3
2008	100.0	48.4	51.6	71.1	28.9
2009	100.0	48.4	51.6	71.4	28.6

¹⁾ NSI data

2. Population by Age on 31.XII.2009¹⁾

<i>Age</i>	<i>Total</i>	<i>Male</i>	<i>Female</i>	<i>Urban</i>	<i>Rural</i>
Total	7563710	3659311	3904399	5401214	2162496
0	76585	39091	37494	57563	19022
1–4	293490	150902	142588	219691	73799
5–9	336730	173285	163445	242875	93855
10–14	319395	163855	155540	225360	94035
15–19	416428	213718	202710	297529	118899
20–24	516606	264403	252203	394307	122299
25–29	536952	276081	260871	421319	115633
30–34	577153	295404	281749	447830	129323
35–39	555128	282046	273082	422431	132697
40–44	518236	260808	257428	387440	130796
45–49	521135	259088	262047	387442	133693
50–54	529280	257396	271884	392262	137018
55–59	530843	251375	279468	385978	144865
60–64	509858	232764	277094	348977	160881
65–69	393744	172098	221646	240733	153011
70–74	342280	142362	199918	196498	145782
75–79	302190	120122	182068	169085	133105
80–84	186380	69565	116815	106548	79832
85–89	82882	28772	54110	46989	35893
90–94	14801	4994	9807	8408	6393
95–99	3186	1028	2158	1742	1444
100+	428	154	274	207	221

¹⁾ NSI data

3. Age¹⁾ Structure of the Population

(percentage)

Year	Total	Age groups		
		0–17	18–64	65+
Total				
1970	100.0	27.5	62.8	9.7
1995	100.0	22.0	62.8	15.2
2000	100.0	19.5	64.1	16.4
2005	100.0	17.5	65.3	17.2
2007	100.0	16.9	65.8	17.3
2008	100.0	16.7	65.9	17.4
2009	100.0	16.7	65.8	17.5
Urban				
1970	100.0	28.1	65.3	6.6
1995	100.0	22.9	65.6	11.5
2000	100.0	20.0	67.7	12.3
2005	100.0	17.7	68.7	13.6
2007	100.0	17.1	69.0	13.9
2008	100.0	16.9	69.1	14.0
2009	100.0	16.8	68.9	14.3
Rural				
1970	100.0	26.8	60.0	13.2
1995	100.0	20.1	57.0	22.9
2000	100.0	18.6	56.3	25.1
2005	100.0	17.0	57.4	25.6
2007	100.0	16.5	57.9	25.6
2008	100.0	16.3	58.1	25.6
2009	100.0	16.1	58.2	25.7

¹⁾ Till 1996 age groups are: 0-14, 15–59 and 60+ years.

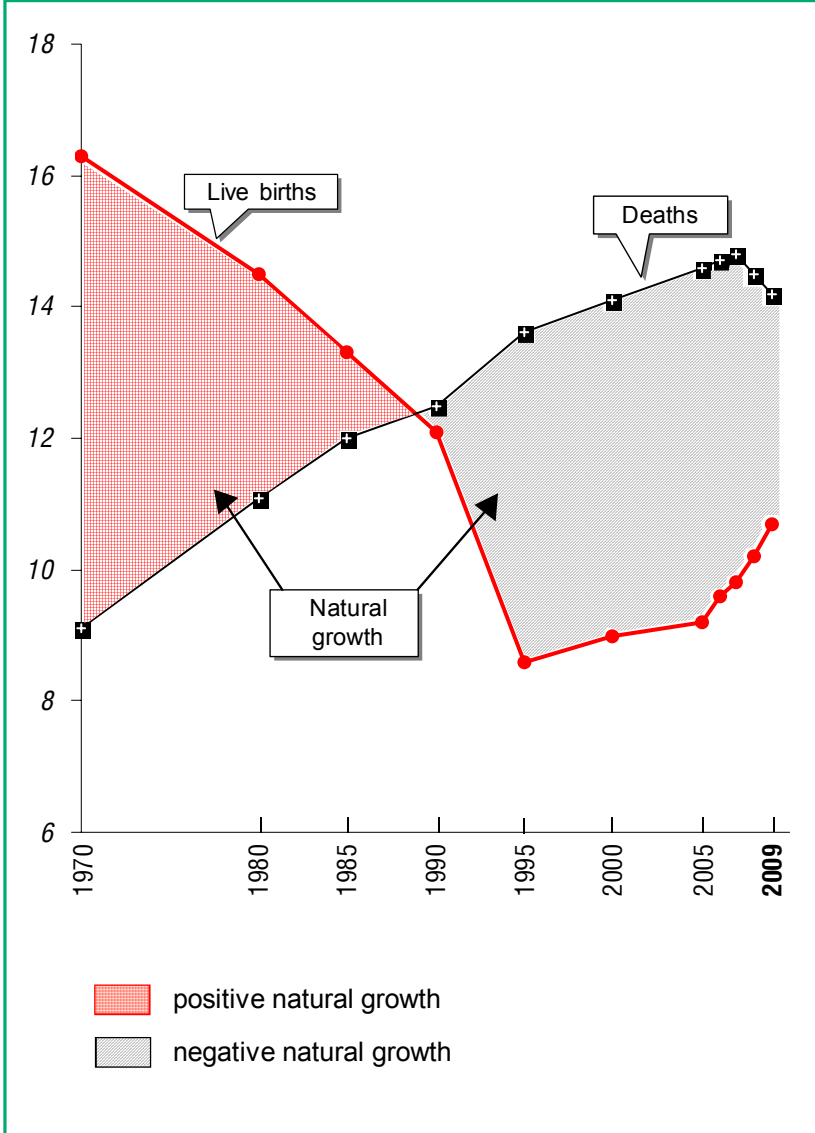
4. Live Births, Deaths and Natural Growth¹⁾

Year	Live births	Deaths	Natural growth	Live births	Deaths	Natural growth
	Number			Per 1000 population		
Total						
1970	138745	77095	61650	16.3	9.1	7.2
1980	128190	97950	30240	14.5	11.1	3.4
1990	105180	108608	-3428	12.1	12.5	-0.4
1995	71967	114670	-42703	8.6	13.6	-5.0
2000	73679	115087	-41408	9.0	14.1	-5.1
2005	71075	113374	-42299	9.2	14.6	-5.4
2007	75349	113004	-37655	9.8	14.8	-5.0
2008	77712	110523	-32811	10.2	14.5	-4.3
2009	80956	108068	-27112	10.7	14.2	-3.5
Urban						
1970	79809	30957	48852	18.0	7.0	11.0
1980	86664	45153	41511	15.7	8.2	7.5
1990	73940	55225	18715	12.6	9.4	3.2
1995	50405	60767	-10362	8.8	10.7	-1.9
2000	52789	64184	-11395	9.5	11.5	-2.0
2005	52280	65309	-13029	9.6	12.0	-2.4
2007	56257	66486	-10229	10.4	12.3	-1.9
2008	58367	65168	-6801	10.8	12.1	-1.3
2009	60664	64335	-3671	11.2	11.9	-0.7
Rural						
1970	58936	46138	12798	14.6	11.4	3.2
1980	41526	52797	-11271	12.4	15.7	-3.3
1990	31240	53383	-22143	10.9	18.6	-7.7
1995	21562	53903	-32341	8.0	19.9	-11.9
2000	20890	50903	-30013	8.1	19.6	-11.5
2005	18795	48065	-29270	8.1	20.8	-12.7
2007	19092	46518	-27426	8.5	20.7	-12.2
2008	19345	45355	-26010	8.7	20.4	-11.7
2009	20292	43733	-23441	9.3	20.1	-10.8

¹⁾ NSI data

Live Births, Deaths and Natural Growth

(per 1000 population)



5. Births and Abortions

Year	<i>Births</i>	<i>Abortions</i>	<i>Births</i>	<i>Abortions</i>
	Number		Per 1000 women at 15–49	
1980	129176	156056	60.4	72.9
1990	105821	144644	49.2	67.2
1995	72425	97092	35.2	47.2
2000	74234	61378	37.0	30.6
2003	67908	48035	35.9	25.4
2005	71640	41795	38.2	22.3
2007	75915	37594	41.2	20.4
2008	78283	36593	42.9	20.0
2009	81572	33733	45.5	18.7

6. Age Specific Fertility Rates

(per 1000 women at 15–49)

Age	1980	1990	1995	2000	2005	2007	2008	2009
Total	59.8	48.9	35.0	36.7	37.9	40.9	42.6	44.9
15–19	80.3	68.3	53.5	47.1	40.1	43.0	45.4	48.9
20–24	192.8	158.4	100.6	89.7	78.6	77.9	79.2	80.3
25–29	92.8	78.3	61.8	72.9	80.9	85.6	87.3	91.6
30–34	32.2	28.8	22.4	32.3	47.3	56.1	60.8	64.8
35–39	9.7	9.4	7.5	9.5	14.5	18.4	20.3	24.5
40–44	2.1	1.8	1.5	1.9	2.1	2.8	3.1	3.8
45–49	0.1	0.1	0.1	0.1	0.1	0.2	0.2	0.3

7. Infant Mortality¹⁾

<i>Year</i>	<i>Total</i>	<i>Urban</i>	<i>Rural</i>
Number			
1970	3788	1811	1977
1980	2594	1560	1034
1990	1554	1020	534
1995	1065	705	360
1997	1123	719	404
2000	981	657	324
2005	739	464	275
2007	690	447	243
2008	668	444	224
2009	729	468	261
Per 1000 live births			
1970	27.3	22.7	33.5
1980	20.2	18.0	24.9
1990	14.8	13.8	17.1
1995	14.8	14.0	16.7
1997	17.5	15.7	22.0
2000	13.3	12.4	15.5
2005	10.4	8.9	14.6
2007	9.2	7.9	12.7
2008	8.6	7.6	11.6
2009	9.0	7.7	12.9

8. Perinatal, Neonatal and Postneonatal Infant Mortality

(per 1000 live births)

	<i>1980</i>	<i>1990</i>	<i>1995</i>	<i>2000</i>	<i>2005</i>	<i>2007</i>	<i>2008</i>	<i>2009</i>
Perinatal ²⁾	15.0	11.1	11.8	12.2	12.0	11.0	10.5	11.3
Neonatal	10.4	7.7	7.8	7.5	6.2	4.9	5.0	5.4
Postneonatal ³⁾	10.0	7.1	7.1	5.9	4.2	4.3	3.6	3.6

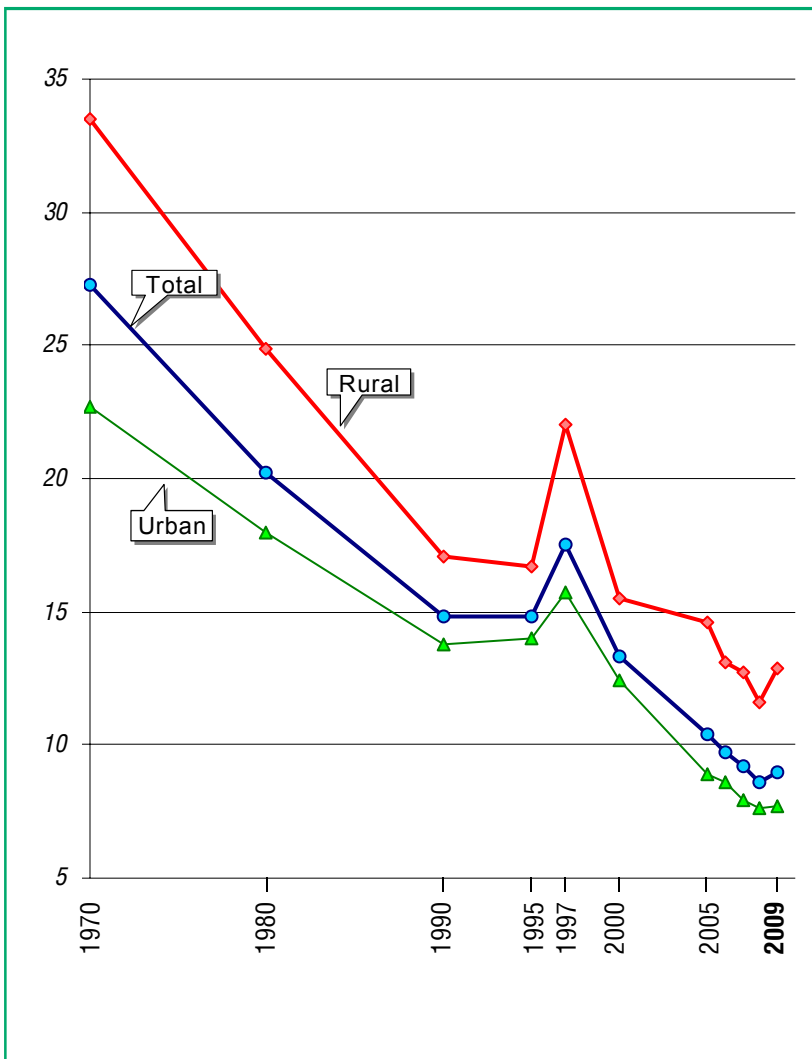
¹⁾ NSI data

²⁾ Per 1000 births.

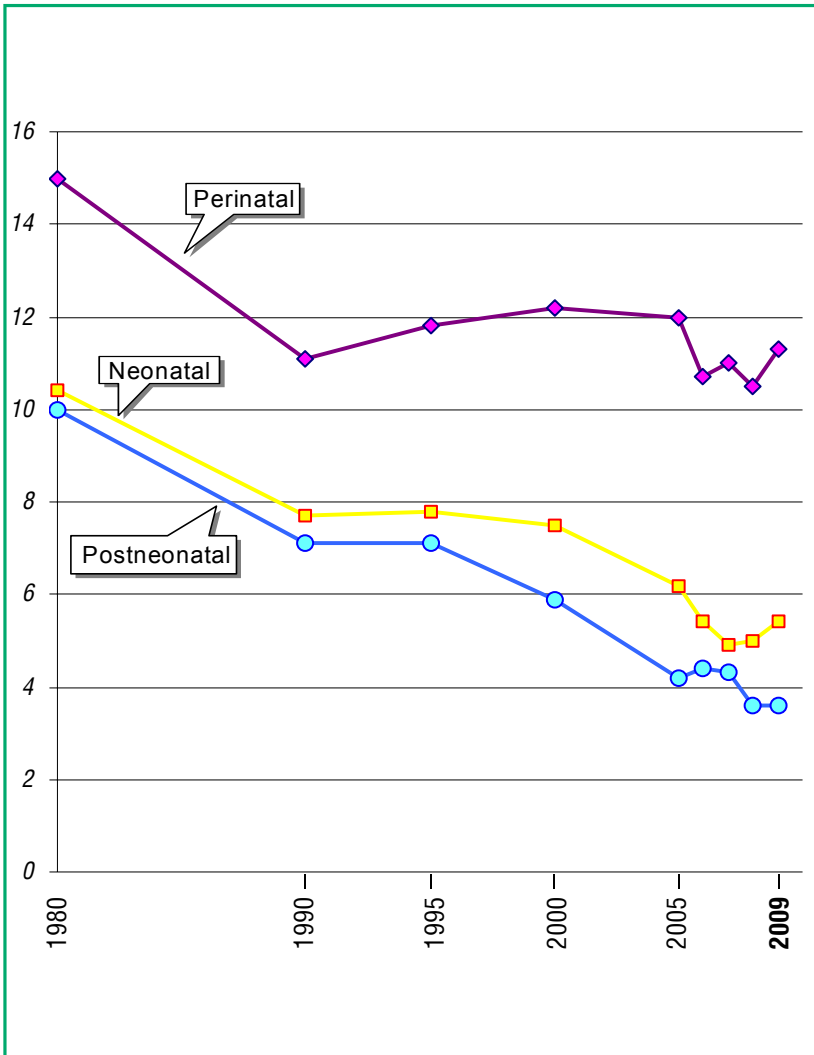
³⁾ Per 1000 live births, excl. deaths before 28th day.

Infant Mortality

(per 1000 live births)



Perinatal, Neonatal and Postneonatal Infant Mortality



9. Stillbirths and Infant Deaths Under 1 Year¹⁾

(number)

Year	Stillbirths	Infant deaths under 1 year			
		Total	Incl:		
			0-6 days	7-27 days	28+ days
Total					
1970	1382	3788	1259	569	1960
1980	986	2594	957	372	1265
1990	641	1554	533	278	743
1995	458	1065	397	162	506
2000	555	981	348	201	432
2005	565	739	296	148	295
2007	566	690	267	103	320
2008	571	668	254	135	279
2009	616	729	306	130	293
Urban					
1970	792	1811	773	264	774
1980	606	1560	640	245	675
1990	449	1020	357	208	455
1995	299	705	282	107	316
2000	365	657	237	141	279
2005	363	464	195	91	178
2007	308	447	174	67	206
2008	383	444	176	84	184
2009	424	468	189	90	189
Rural					
1970	590	1977	486	305	1186
1980	380	1034	317	127	590
1990	192	534	176	70	288
1995	159	360	115	55	190
2000	190	324	111	60	153
2005	202	275	101	57	117
2007	258	243	93	36	114
2008	188	224	78	51	95
2009	192	261	117	40	104

¹⁾ NSI data

10. Mortality by Age Groups

(per 1000 population of the same age group)

Year	Total	Age groups								
		under 1 year ¹⁾	1-9	10-19	20-29	30-39	40-49	50-59	60-69	70+
1970	9.1	27.3	0.8	0.6	1.0	1.5	3.2	8.1	22.4	84.2
1980	11.1	20.2	0.7	0.6	1.0	1.6	3.6	9.1	24.3	88.1
1990	12.5	14.8	0.6	0.6	1.1	1.8	4.3	10.0	23.5	93.4
2000	14.1	13.3	0.5	0.4	0.8	1.7	4.3	10.1	23.8	84.5
2005	14.6	10.4	0.4	0.4	0.8	1.5	4.2	10.4	22.4	80.2
2007	14.8	9.2	0.4	0.4	0.8	1.4	3.9	10.2	21.4	80.8
2008	14.5	8.6	0.4	0.5	0.8	1.4	3.8	9.8	20.5	79.4
2009	14.2	9.0	0.3	0.4	0.8	1.4	3.7	9.7	20.5	77.1

¹⁾ Per 1000 live births

11. Life Expectancy in Republic of Bulgaria¹⁾

(in years)

Periods	Total	Male	Female
1935-1939	51.75	50.98	52.56
1956-1957	65.89	64.17	67.65
1960-1963	69.59	67.82	71.35
1969-1971	71.11	68.58	73.86
1974-1976	71.31	68.68	73.91
1978-1980	71.14	68.35	73.55
1984-1986	71.19	68.17	74.44
1989-1991	71.22	68.02	74.66
1993-1995	70.60	67.10	74.90
1995-1998	70.50	67.10	74.30
1997-1999	71.00	67.60	74.60
1998-2000	71.70	68.15	75.34
1999-2001	71.80	68.50	75.20
2000-2002	71.87	68.54	75.37
2003-2005	72.60	69.00	76.30
2005-2007	72.70	69.20	76.30
2006-2008	73.00	69.50	76.60
2007-2009	73.43	69.90	77.08

¹⁾ NSI data

II. MORBIDITY AND MORTALITY BY CAUSES

1. Registered Cases of Certain Infectious Diseases Subject to Obligatory Reporting

(per 100000 population)

Cases	1980	1990	1995	2000	2005	2009
Diphtheria	0.0	–	–	–	–	–
Scarlet fever	145.6	85.7	110.8	64.6	65.5	65.1
Measles	121.5	1.7	2.0	0.6	0.0	29.7
Pertussis	1.7	0.3	0.9	1.3	3.1	3.3
Rubeolla	779.1	147.3	123.5	348.2	25.4	0.6
Varicella	537.2	418.6	418.5	285.8	319.1	383.9
Mumps	73.6	1.5	0.8	28.8	7.9	14.6
Meningococcal meningitis and sepsis	1.2	0.9	0.9	1.1	0.4	0.3
Poliomyelitis	–	–	–	–	–	–
Q fever	0.0	0.4	1.5	1.8	0.6	0.3
Crimean-Congo haemorrhagic fever	0.1	0.1	0.2	0.1	0.2	0.1
Lyme disease	–	–	3.8	3.6	12.6	11.6
Malaria ¹⁾	1.4	0.5	0.6	0.2	0.2	0.1
Typhoid fever	0.0	0.0	–	–	–	–
Shigellosis	96.9	61.9	74.9	19.8	21.2	9.9
Acute viral hepatitis	110.8	274.2	92.5	104.8	85.2	24.9
Anthrax	0.1	0.1	0.2	0.2	0.0	0.0
Leptospirosis	0.2	0.3	0.5	0.4	0.6	0.1
Tetanus	0.2	0.1	0.1	0.0	0.0	–
Bacterial meningitis and meningoencephalitis	•	•	•	•	2.8	2.3
Viral meningitis and meningoencephalitis	•	•	•	•	5.0	3.6

¹⁾ All registered cases are imported.

2. Registered Cases of Active Tuberculosis

(per 100000 population)

<i>Forms of disease</i>	1980	1990	1995	2000	2005	2007	2009	2009
Total	178.2	106.0	154.9	173.4	127.7	120.0	119.7	109.4
Incl. new cases	37.0	25.9	40.5	41.0	40.1	37.1	38.5	33.6
Tuberculosis of the respiratory system	115.1	80.5	123.4	144.8	106.5	100.2	99.9	95.0
Incl. new cases	25.6	19.9	33.9	35.6	35.4	33.0	34.4	30.0
Tuberculosis of the bones and joints	12.4	5.3	5.1	4.8	3.6	3.8	3.6	2.5
Incl. new cases	2.2	1.0	1.0	1.0	0.7	0.7	0.6	0.4
Tuberculosis of the nervous system ¹⁾	0.5	0.3	0.5	0.5	0.2	0.4	0.4	0.2
Incl. new cases	0.1	0.1	0.1	0.1	0.1	0.1	0.1	0.1
Other forms of tuberculosis	50.2	19.9	25.9	23.3	17.4	15.6	15.8	11.7
Incl. new cases	9.1	4.9	5.5	4.3	3.9	3.3	3.4	3.1

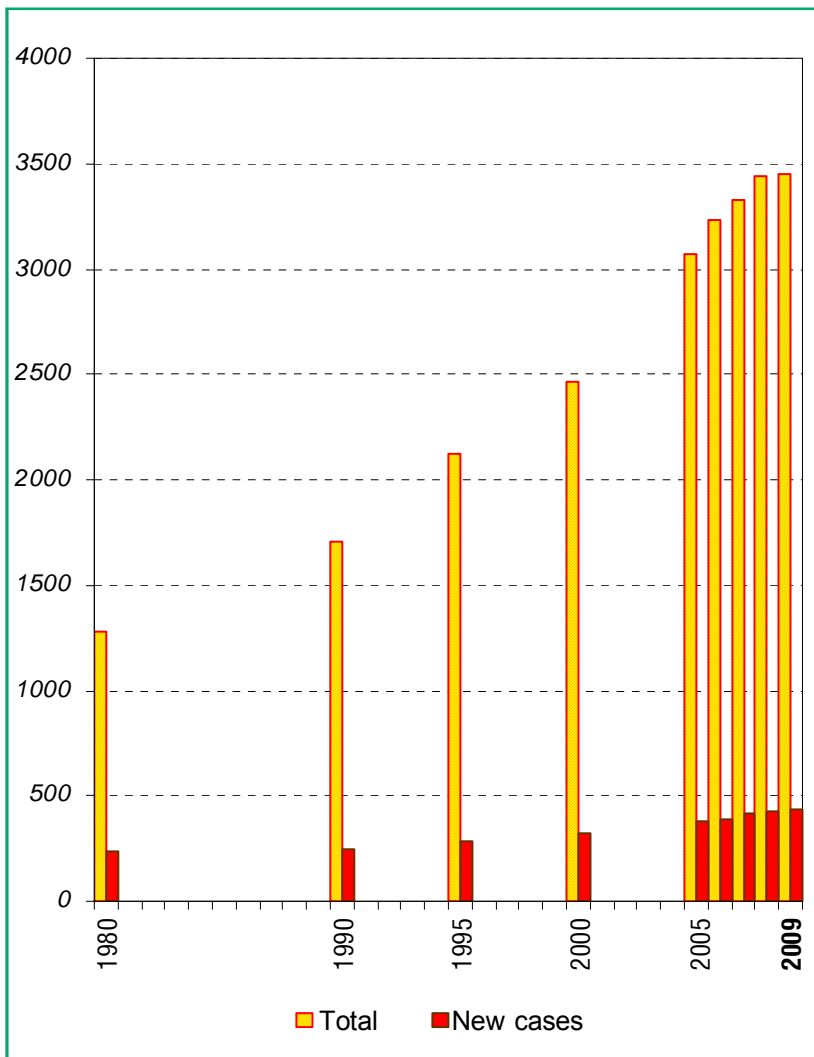
¹⁾ Till 2004 – Meningitis and CNS tuberculosis (ICD-9)

3. Registered Cases of Malignant Neoplasms

<i>Year</i>	<i>Total</i>	<i>incl. new cases</i>	<i>Total</i>	<i>incl. new cases</i>
	Number		Per 100 000 population	
1980	113336	20620	1279.0	232.7
1990	153651	22038	1762.4	252.8
1995	178179	23966	2119.6	285.1
2000	201226	26156	2462.9	320.1
2005	237607	29354	3069.9	379.3
2007	255120	31706	3330.7	413.9
2008	262059	32478	3437.6	426.0
2009	261974	33246	3453.8	438.3

Registered Cases of Malignant Neoplasms

(per 100 000 population)



4. Registered Cases of Malignant Neoplasms by Localization

(per 100 000 population)

<i>Localization ICD-10</i>	2008		2009	
	<i>Total</i>	<i>Incl. new cases</i>	<i>Total</i>	<i>Incl. new cases</i>
Total	3437.6	426.0	3453.8	438.3
Lips, oral cavity and pharynx	118.3	10.8	112.2	11.9
Incl. lips	69.5	2.4	63.5	2.8
Digestive organs	516.6	106.6	521.4	106.9
Incl. stomach	80.9	21.2	78.9	20.1
colon	206.4	33.9	212.2	34.6
rectosigmoid junction, rectum, anus and anal canal	158.3	23.3	158.8	24.1
Respiratory and intrathoracic organs	224.1	58.7	221.5	57.5
Incl. trachea, bronchus and lung	146.5	49.2	143.0	47.9
Bone and articular cartilage	11.2	1.0	11.0	0.9
Melanoma and other malignant neoplasms of skin	736.3	53.1	734.3	60.7
Mesothelial and soft tissue	37.0	3.9	37.0	4.1
Malignant neoplasm of breast	601.3	46.6	607.2	49.5
Incl. female breast	1156.6 ¹⁾	89.2 ¹⁾	1163.9 ¹⁾	94.7 ¹⁾
Female genital organs	1007.2 ¹⁾	83.0 ¹⁾	1027.1 ¹⁾	86.5 ¹⁾
Incl. cervix uteri	351.5 ¹⁾	28.1 ¹⁾	355.1 ¹⁾	27.5 ¹⁾
corpus uteru	429.1 ¹⁾	29.1 ¹⁾	437.6 ¹⁾	32.5 ¹⁾
ovary	176.7 ¹⁾	20.0 ¹⁾	181.2 ¹⁾	21.7 ¹⁾
Male genital organs	369.5 ²⁾	50.5 ²⁾	375.7 ²⁾	51.7 ²⁾
Incl. prostate	271.1 ²⁾	42.9 ²⁾	275.5 ²⁾	44.1 ²⁾
Urinary tract	205.2	27.8	211.1	28.8
Incl. bladder	143.0	18.7	147.0	19.0
Eye, brain and other parts of central nervous system	46.1	9.5	45.0	8.9
Thyroid and other endocrine glands	55.9	4.2	57.6	4.1
Ill-defined, secondary and unspecified sites	48.2	16.7	45.7	17.5
Lymphoid, haematopoietic and related tissue	138.9	19.8	137.8	17.6
Independent (primary) multiple sites	0.0	0.0	-	-

¹⁾ Per 100 000 female

²⁾ Per 100 000 male

5. Registered Cases of Some Venereal and Skin Infections

(per 100 000 population)

<i>Disease</i>	1990	1995	2000	2005	2007	2008	2009
Syphilis	31.2	54.2	119.7	66.5	51.3	43.6	44.7
incl. new cases	4.4	20.2	19.4	7.7	6.2	5.8	5.9
Gonorrhoea	68.4	27.8	9.6	2.8	2.4	2.6	2.7
incl. new cases	62.3	23.7	7.3	2.3	1.9	2.3	2.5
Microsporia	35.3	36.2	32.2	23.3	30.6	33.3	33.1
incl. new cases	32.3	32.1	23.3	17.1	24.9	26.8	29.7
Trychophytia	13.3	31.3	26.7	25.3	27.5	31.5	34.5
incl. new cases	9.9	28.8	15.9	18.5	24.5	26.5	30.1

6. Patients Under Observation of Psychiatric Facilities, Wards and Consultations by Type of Disease

<i>Name of disease – ICD-10</i>	2008		2009	
	<i>Number</i>	<i>per 100 000 population</i>	<i>Number</i>	<i>per 100 000 population</i>
Total	173079	2275.4	171717	2270.3
Mental and behavioural disorders	159747	2100.1	158917	2101.0
Dementia	3528	46.4	3497	46.2
Delirium, not induced by alcohol and other psychoactive substances	906	11.9	872	11.5
Other mental disorders due to brain disease	4232	55.6	4448	58.8
Mental and behavioural disorders due to use of alcohol	15379	202.2	15291	202.2
Mental and behavioural disorders due to use of other psychoactive substance	887	11.7	764	10.1
Mental and behavioural disorders due to use of opioids	564	7.4	498	6.6
Schizophrenia, schizotypal and delusional disorders	38779	509.8	38627	510.7
Schizophrenia	28264	371.6	28339	374.7
Acute and transient psychotic disorders	3007	39.5	2984	39.5
Mood [affective] disorders	29691	390.3	29380	388.4
Manic episode	3825	50.3	3730	49.3
Bipolar affective disorder	7034	92.5	7144	94.5
Depressive episode	7870	103.5	7824	103.4
Recurrent depressive disorder	9549	125.5	9732	128.7
Neurotic, stress-related and somatoform disorders	16833	221.3	16740	221.3
Disorders of eating, sleep and sexual	186	2.4	177	2.3
Disorders of adult personality and behaviour	6231	81.9	6203	82.0
Mental retardation	39304	516.7	39283	519.4
Specific disorders of psychological development	773	10.2	750	9.9
Pervasive developmental disorders	425	5.6	409	5.4
Hyperkinetic disorders	520	6.8	525	6.9
Other disorders of behaviour and emotions	489	6.4	504	6.7
Nonorganic enuresis	489	6.4	485	6.4
All other classes of diseases	13332	175.3	12800	169.3
Epilepsy	13315	175.0	12785	169.0

7. Hospitalized Patients (discharged and deceased) in Hospitals by Age^{1), 2), 3)}

Year	Age group				
	Total	0-17	18+	Incl.:	
				18-64	65+
Number					
1985	1588695	287198	1301497	•	•
1990	1534738	269742	1264996	•	•
1995	1283472	220525	1062947	•	•
2000	1181097	193861	987236	•	•
2005	1614313	308107	1306206	880895	425311
2007	1735341	303307	1432034	939129	492905
2008	1825488	308665	1516823	989356	527467
2009	1958897	322852	1636045	1058525	577520
Per 100 population ⁴⁾					
1985	17.7	14.8	18.5	•	•
1990	17.6	15.2	18.2	•	•
1995	15.3	14.7	15.4	•	•
2000	14.5	12.0	15.1	•	•
2005	20857.0	22576.3	20489.0	17459.0	31986.7
2007	22655.3	23269.4	22529.4	18661.9	37229.4
2008	23945.9	24114.4	23911.9	19708.8	39853.6
2009	25825.5	25526.1	25885.4	21189.7	43590.9

¹⁾ Till 1999 – from general type hospitals only.

²⁾ Till 1996 age groups are: 0–14 and 15+ years.

³⁾ From 2005 incl. healthy live births.

⁴⁾ The indicators from 2003 are calculated per 100 000 population.

8. Hospitalized Patients (discharged and deceased) in Hospitals by Classes of ICD-10 in 2009

ICD-10	Classes	Number	Per 100000 population	Structure (%)
	Total	1958897	25825.5	100.0
	I.Certain infectious and parasitic diseases	56034	738.7	2.9
	II.Neoplasms	118680	1564.6	6.1
	III.Diseases of the blood and blood-forming organs and certain disorders involving the immune mechanism	12454	164.2	0.6
	IV.Endocrine, nutritional and metabolic diseases	73352	967.1	3.7
	V.Mental and behavioural disorders	51859	683.7	2.6
	VI.Diseases of the nervous system	68946	909.0	3.5
	VII.Diseases of the eye and adnexa	60238	794.2	3.1
	VIII.Diseases of the ear and mastoid process	28053	369.8	1.4
	IX.Diseases of the circulatory system	293331	3867.2	15.0
	X.Diseases of the respiratory system	246528	3250.1	12.6
	XI.Diseases of the digestive system	158733	2092.7	8.1
	XII.Diseases of the skin and subcutaneous tissue	35190	463.9	1.8
	XIII.Diseases of the musculoskeletal system and connective tissue	70749	932.7	3.6
	XIV.Diseases of the genitourinary system	135490	1786.3	6.9
	XV.Pregnancy, childbirth and the puerperium	153465	2023.2	7.8
	XVI.Certain conditions originating in the perinatal period	14872	196.1	0.8
	XVII.Congenital malformations, deformations and chromosomal abnormalities	5758	75.9	0.3
	XVIII.Symptoms, signs and abnormal clinical and laboratory findings, not elsewhere classified	5268	69.5	0.3
	XIX.Injury, poisoning and certain other consequences of external causes	104083	1372.2	5.3
	XXI.Factors influencing health status and contact with health services ¹⁾	265814	3504.4	13.6

¹⁾ Incl. 63103 healthy live births.

9. Hospitalized Patients (discharged and deceased) in Hospitals 0-17 Years of Age by Classes of ICD-10 in 2009

ICD-10	<i>Classes</i>	<i>Number</i>	<i>Per 100000 population</i>	<i>Structure (%)</i>
	Total	322852	25526.1	100.0
	I.Certain infectious and parasitic diseases	28325	2239.5	8.8
	II.Neoplasms	2746	217.1	0.8
	III.Diseases of the blood and blood-forming organs and certain disorders involving the immune mechanism	3017	238.5	0.9
	IV.Endocrine, nutritional and metabolic diseases	4207	332.6	1.3
	V.Mental and behavioural disorders	2347	185.6	0.7
	VI.Diseases of the nervous system	5554	439.1	1.7
	VII.Diseases of the eye and adnexa	3338	263.9	1.0
	VIII.Diseases of the ear and mastoid process	3454	273.1	1.1
	IX.Diseases of the circulatory system	3854	304.7	1.2
	X.Diseases of the respiratory system	112717	8911.9	34.9
	XI.Diseases of the digestive system	15459	1222.3	4.8
	XII.Diseases of the skin and subcutaneous tissue	3525	278.7	1.1
	XIII.Diseases of the musculoskeletal system and connective tissue	2525	199.7	0.8
	XIV.Diseases of the genitourinary system	9312	736.2	2.9
	XV.Pregnancy, childbirth and the puerperium	9944	786.2	3.1
	XVI.Certain conditions originating in the perinatal period	14872	1175.8	4.6
	XVII.Congenital malformations, deformations and chromosomal abnormalities	4547	359.5	1.4
	XVIII.Symptoms, signs and abnormal clinical and laboratory findings, not elsewhere classified	571	45.2	0.2
	XIX.Injury, poisoning and certain other consequences of external causes	21014	1661.5	6.5
	XXI.Factors influencing health status and contact with health services ¹⁾	71524	5655.0	22.2

¹⁾ Incl. 63103 healthy live births.

**10. Hospitalized Patients (discharged and deceased)
in Hospitals 18-64 Years of Age
by Classes of ICD-10 in 2009**

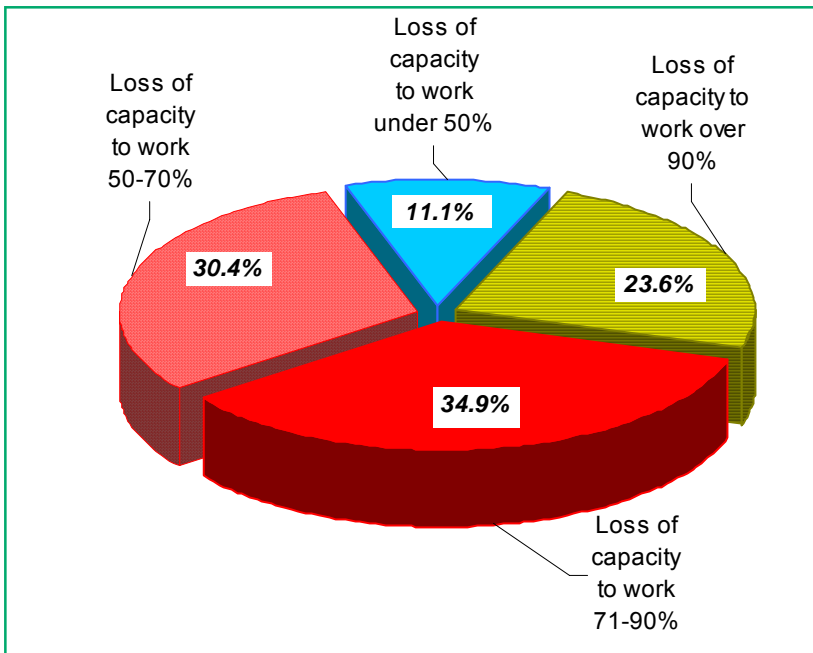
ICD-10	<i>Classes</i>	<i>Number</i>	<i>Per 100000 population</i>	<i>Structure (%)</i>
	Total	1058525	21189.7	100.0
	I. Certain infectious and parasitic diseases	20153	403.4	1.9
	II. Neoplasms	73292	1467.2	6.9
	III. Diseases of the blood and blood-forming organs and certain disorders involving the immune mechanism	5772	115.5	0.6
	IV. Endocrine, nutritional and metabolic diseases	42220	845.1	4.0
	V. Mental and behavioural disorders	44598	892.8	4.2
	VI. Diseases of the nervous system	42620	853.2	4.0
	VII. Diseases of the eye and adnexa	22428	449.0	2.1
	VIII. Diseases of the ear and mastoid process	17085	342.0	1.6
	IX. Diseases of the circulatory system	129218	2586.7	12.2
	X. Diseases of the respiratory system	82355	1648.6	7.8
	XI. Diseases of the digestive system	89808	1797.8	8.5
	XII. Diseases of the skin and subcutaneous tissue	22838	457.2	2.2
	XIII. Diseases of the musculoskeletal system and connective tissue	49079	982.5	4.6
	XIV. Diseases of the genitourinary system	92723	1856.1	8.8
	XV. Pregnancy, childbirth and the puerperium	143521	2873.0	13.6
	XVI. Certain conditions originating in the perinatal period	-	-	-
	XVII. Congenital malformations, deformations and chromosomal abnormalities	1123	22.5	0.1
	XVIII. Symptoms, signs and abnormal clinical and laboratory findings, not elsewhere classified	2593	51.9	0.2
	XIX. Injury, poisoning and certain other consequences of external causes	56292	1126.9	5.3
	XXI. Factors influencing health status and contact with health services	120807	2418.3	11.4

11. Hospitalized Patients (discharged and deceased) in Hospitals over 65 Years of Age by Classes of ICD-10 in 2009

ICD-10	<i>Classes</i>	<i>Number</i>	<i>Per 100000 population</i>	<i>Structure (%)</i>
	Total	577520	43590.9	100.0
	I. Certain infectious and parasitic diseases	7556	570.3	1.3
	II. Neoplasms	42642	3218.6	7.4
	III. Diseases of the blood and blood-forming organs and certain disorders involving the immune mechanism	3665	276.6	0.6
	IV. Endocrine, nutritional and metabolic diseases	26925	2032.3	4.7
	V. Mental and behavioural disorders	4914	370.9	0.9
	VI. Diseases of the nervous system	20772	1567.9	3.6
	VII. Diseases of the eye and adnexa	34472	2601.9	6.0
	VIII. Diseases of the ear and mastoid process	7514	567.1	1.3
	IX. Diseases of the circulatory system	160259	12096.3	27.7
	X. Diseases of the respiratory system	51456	3883.9	8.9
	XI. Diseases of the digestive system	53466	4035.6	9.3
	XII. Diseases of the skin and subcutaneous tissue	8827	666.3	1.5
	XIII. Diseases of the musculoskeletal system and connective tissue	19145	1445.0	3.3
	XIV. Diseases of the genitourinary system	33455	2525.2	5.8
	XV. Pregnancy, childbirth and the puerperium	–	–	–
	XVI. Certain conditions originating in the perinatal period	–	–	–
	XVII. Congenital malformations, deformations and chromosomal abnormalities	88	6.6	0.0
	XVIII. Symptoms, signs and abnormal clinical and laboratory findings, not elsewhere classified	2104	158.8	0.4
	XIX. Injury, poisoning and certain other consequences of external causes	26777	2021.1	4.6
	XXI. Factors influencing health status and contact with health services	73483	5546.5	12.7

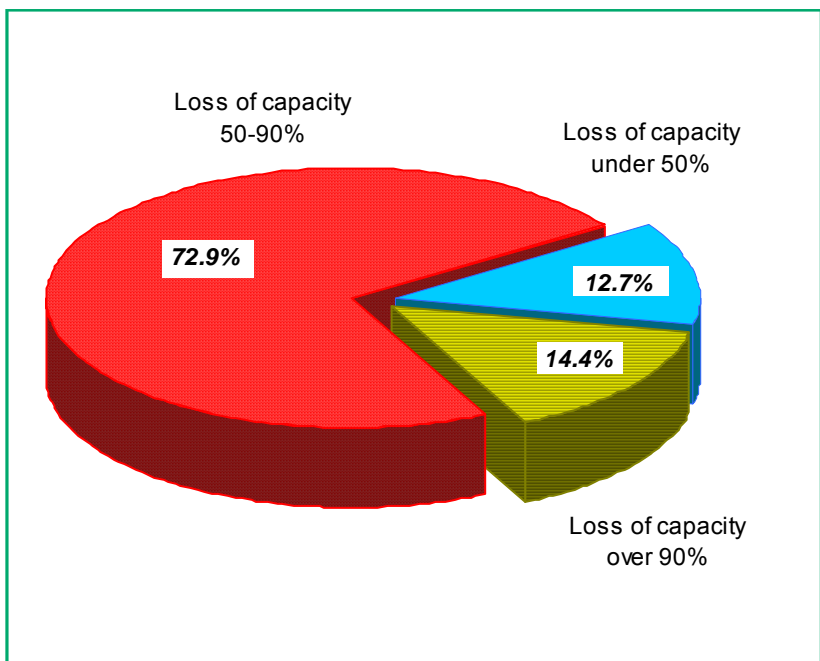
12. Primary Disability of Persons over 16 Years of Age

Year	Loss of capacity to work								total	
	Over 90%		71% – 90%		50% – 70%		under 50%			
	number	%	number	%	number	%	number	%	number	per 1000 population over 16 years of age
2001	29335	36.8	31394	39.3	14847	18.6	4227	5.3	79803	12.1
2002	35249	34.8	40702	40.2	19578	19.3	5824	5.7	101353	15.3
2003	35535	30.6	47834	41.1	24582	21.1	8414	7.2	116365	17.6
2005	28451	24.7	44452	38.6	28837	25.0	13438	11.7	115178	17.5
2007	16376	23.1	23979	33.8	20531	29.0	9973	14.1	70859	10.8
2008	15339	24.3	22111	35.1	18544	29.4	7093	11.2	63087	9.7
2009	16330	23.6	24082	34.9	21019	30.4	7647	11.1	69078	10.7



13. Primary Disability of Persons under 16 Years of Age

Year	Loss of capacity								total	
	over 90%		71% – 90%		50% – 70%		under 50%			
	number	%	number	%	number	%	number	%	number	per 1000 population under 16 years of age
2001	2570	37.8	1757	25.8	1735	25.5	740	10.9	6802	5.1
2002	1773	29.0	1613	26.4	1912	31.3	810	13.3	6108	4.8
2003	1234	26.7	1044	22.6	1768	38.3	573	12.4	4619	3.8
2005	801	17.1	•	•	•	•	819	17.5	4674	4.0
2007	469	13.3	•	•	•	•	600	17.0	3532	3.2
2008	405	13.0	•	•	•	•	487	15.7	3106	2.8
2009	517	14.4	•	•	•	•	453	12.7	3578	3.3



14. Primary Disability of Persons over 16 Years of Age by Class of Disease and Loss of Capacity to work in 2009

(number)

ICD-10	Classes	over 90%	71%–90%	50%–70%	under 50%	Total
	Total	16330	24082	21019	7647	69078
	I.Certain infectious and parasitic diseases	57	666	145	42	910
	II.Neoplasms	5662	5381	701	89	11833
	IV.Endocrine, nutritional and metabolic diseases	343	1457	2534	802	5136
	V.Mental and behavioural disorders	789	1204	1147	208	3348
	VI.Diseases of the nervous system	683	728	797	361	2569
	VII.Diseases of the eye and adnexa	552	554	732	244	2082
	VIII.Diseases of the ear and mastoid process	28	345	526	221	1120
	IX.Diseases of the circulatory system	5766	9710	8715	2968	27159
	X.Diseases of the respiratory system	70	231	664	445	1410
	XI.Diseases of the digestive system	267	529	492	148	1436
	XIII.Diseases of the musculoskeletal system and connective tissue	874	1980	2249	1053	6156
	XIV.Diseases of the genitourinary system	321	504	677	237	1739
	XVII.Congenital malformations, deformations and chromosomal abnormalities	17	68	169	58	312
	XIX.Injury, poisoning and certain other consequences of external causes	865	607	1267	693	3432
	Other classes	36	118	204	78	436

15. Primary Disability of Persons under 16 Years of Age by Class of Disease and Loss of Capacity in 2009

(number)

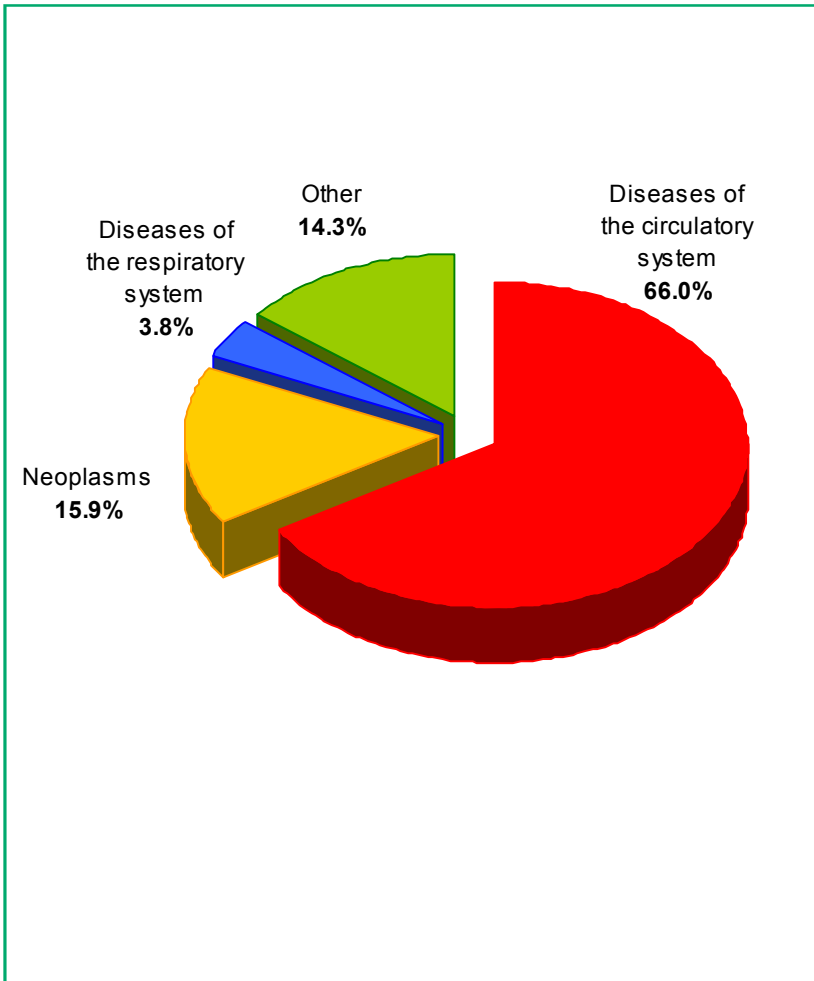
ICD-10	<i>Classes</i>	<i>over 90%</i>	<i>50%–90%</i>	<i>under 50%</i>	<i>Total</i>
	Total	517	2608	453	3578
	I. Certain infectious and parasitic diseases	3	125	2	130
	II. Neoplasms	49	55	0	104
	III. Diseases of the blood and blood-forming organs and certain disorders involving the immune mechanism	8	37	1	46
	IV. Endocrine, nutritional and metabolic diseases	13	200	1	214
	V. Mental and behavioural disorders	106	389	90	585
	VI. Diseases of the nervous system	123	439	51	613
	VII. Diseases of the eye and adnexa	16	73	16	105
	VIII. Diseases of the ear and mastoid process	8	111	9	128
	IX. Diseases of the circulatory system	3	15	6	24
	X. Diseases of the respiratory system	0	543	190	733
	XI. Diseases of the digestive system	7	34	3	44
	XIII. Diseases of the musculoskeletal system and connective tissue	9	48	5	62
	XIV. Diseases of the genitourinary system	2	41	5	48
	XVII. Congenital malformations, deformations and chromosomal abnormalities	165	425	65	655
	XIX. Injury, poisoning and certain other consequences of external causes	3	41	7	51
	Other classes	2	32	2	36

16. Mortality by Causes in 2009

<i>Cause of death (ICD-10)</i>	<i>Number</i> ¹⁾	<i>Per 100000 population</i>	<i>Percentage (%)</i>
Total	108068	1424.7	100.0
Certain infectious and parasitic diseases	587	7.7	0.5
Neoplasms	17157	226.2	15.9
Diseases of the blood and blood-forming organs and certain disorders involving the immune mechanism	160	2.1	0.1
Endocrine, nutritional and metabolic diseases	1989	26.2	1.8
Mental and behavioural disorders	77	1.0	0.1
Diseases of the nervous system	954	12.6	0.9
Diseases of the eye and adnexa	7	0.1	0.0
Diseases of the ear and mastoid process	3	0.0	0.0
Diseases of the circulatory system	71306	940.1	66.0
Diseases of the respiratory system	4154	54.8	3.8
Diseases of the digestive system	3268	43.1	3.0
Diseases of the skin and subcutaneous tissue	27	0.4	0.0
Diseases of the musculoskeletal system and connective tissue	38	0.5	0.0
Diseases of the genitourinary system	1239	16.3	1.1
Pregnancy, childbirth and the puerperium	4	0.1	0.0
Certain conditions originating in the perinatal period	323	4.3	0.3
Congenital malformations, deformations and chromosomal abnormalities	152	2.0	0.1
Symptoms, signs and abnormal clinical and laboratory findings, not elsewhere classified	3207	42.3	3.0
External causes of morbidity and mortality	3416	45.0	3.2

¹⁾ NSI data

Mortality by Causes in 2009



III. HEALTH FACILITIES

1. Health Facilities and Hospital Beds in 2009

<i>Types of health establishments</i>	<i>Number</i>	<i>Beds</i>
Health establishments for hospital care – total	306	45906
Multiprofile hospitals	122	27779
Multiprofile hospital for active treatment	122	27779
Specialized hospitals	69	8105
Specialized hospital for active treatment	29	3616
Specialized hospital for continuing and long term treatment	6	356
Specialized hospital for continuing, long term treatment and rehabilitation	12	840
Specialized hospital for rehabilitation	22	3293
Psychiatric hospitals	12	2685
Private facilities for hospital care	93	5291
Health facilities for outpatient care (from Health establishments' reports)		
Outpatient facilities for primary medical care – individual practices	3832	–
Outpatient facilities for primary dental care – individual practices	4724	–
Outpatient facilities for primary medical care – group practices	223	–
Outpatient facilities for primary dental care – group practices	241	–
Outpatient facilities for specialized medical care – individual practices	3099	–
Outpatient facilities for specialized dental care – individual practices	67	–

1. Health Facilities and Hospital Beds in 2009

(continued from previous)

<i>Types of health establishments</i>	<i>Number</i>	<i>Beds</i>
Outpatient facilities for specialized medical care – group practices	124	–
Outpatient facilities for specialized dental care – group practices	1	–
Medical center	590	541
Dental center	49	8
Medco-dental center	33	24
Diagnostic-consulting center	115	283
Stand-alone medico-diagnostic and medico-technical laboratories	928	–
Other healthcare and health establishments		
Prophylactic centers	48¹⁾	4135
For pulmonary diseases	12	762
For dermato-venerological diseases	10	218
For oncological diseases	12	1625
For psychiatric diseases	12	1530
Emergency healthcare centers	28	–
Stand alone centers for transfusional haematology	4	–
Medico-social care for children centers	32	3859
Hospises	59	659
National centers without beds	6	–
Regional centers for health	28	–
Regional inspections for protection and control of public health	28	–
Sanatorial facilities	4	740

2. Beds in Hospitals on 31.XII.2009 by Type

<i>Type of bed</i>	<i>Number of beds</i>	<i>Percentage (%)</i>	<i>Per 10 000 population</i>
Total¹⁾	45906		60.7
Incl.:			
Total²⁾	43860	100.0	58.0
Incl.:			
Reanimation and intensive care	2371	5.4	3.2
incl.: internal diseases	135	0.3	0.2
cardiological	407	0.9	0.6
pediatric	217	0.5	0.3
surgical	159	0.3	0.2
neurological	261	0.6	0.3
gynecological	29	0.1	0.1
intensive care ward	913	2.1	1.2
other	250	0.6	0.3
For active treatment	34041	77.6	45.0
incl.: internal diseases	3087	7.0	4.1
gastroenterological	1042	2.4	1.4
endocrinological	672	1.5	0.9
cardiological	1939	4.4	2.6
reumocardiological	254	0.6	0.3
pulmophthysiatrical	1688	3.9	2.2
nephrological	555	1.3	0.7
haematological	394	0.9	0.5
pediatric	2468	5.6	3.3
micropediatric	462	1.1	0.6
neonatological	1379	3.2	1.8

¹⁾ Hospital beds of other administrations included, but not allocated by type.

²⁾ Hospital beds of other administrations not included.

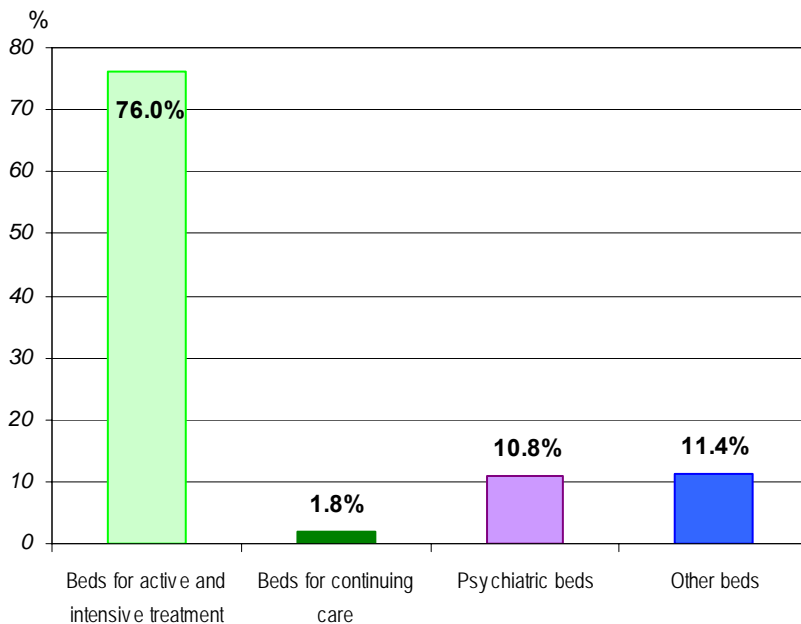
2. Beds in Hospitals on 31.XII.2009 by Type

(continued from previous)

<i>Type of bed</i>	<i>Number of beds</i>	<i>Percentage (%)</i>	<i>Per 10 000 population</i>
surgical	4563	10.4	6.0
traumatological	1704	3.9	2.3
urological	923	2.1	1.2
neurosurgical	410	0.9	0.5
gynecological	1217	2.8	1.6
obstetrics	1491	3.4	2.0
pathological pregnancy	763	1.7	1.0
infectious	980	2.2	1.3
ophthalmological	830	1.9	1.1
oto-rhino-laryngological	780	1.8	1.0
psychiatric	2467	5.6	3.3
neurological	2870	6.5	3.8
dermato-venerological	308	0.7	0.4
toxicological	61	0.1	0.1
oncological	734	1.7	1.0
For continuing and long term treatment	7130	16.3	9.4
incl.: internal diseases	239	0.5	0.3
cardiological	41	0.1	0.1
pulmophthysiatrical	426	1.0	0.6
orthopaedo-traumatological	4	0.0	0.0
psychiatric	882	2.0	1.2
neurological	109	0.3	0.1
for premature baby, hypotrophy, or birth defects	33	0.1	0.0
physiotherapeutic and rehabilitation	5392	12.3	7.1
other	4	0.0	0.0
Day care	309	0.7	0.4
Home care	9	0.0	0.0

3. Beds in Hospitals and Prophylactic centers on 31.XII.2009 by Type¹⁾

Type of beds	Number of beds	Percentage (%)	Per 10 000 population
Total²⁾	50041		66.2
Incl.:			
Total³⁾	47995	100.0	63.5
Incl.:			
Beds for active and intensive treatment	36460	76.0	48.2
Beds for continuing care	871	1.8	1.2
Psychiatric beds	5179	10.8	6.8
Other beds	5485	11.4	7.3
Incl.: physiotherapeutic and rehabilitation day care	5392	11.2	7.2
	93	0.2	0.1



¹⁾ According to statistical grouping used by Eurostat.

²⁾ Hospital beds of other administrations included, but not allocated by type.

³⁾ Hospital beds of other administrations not included.

IV. MEDICAL PERSONNEL

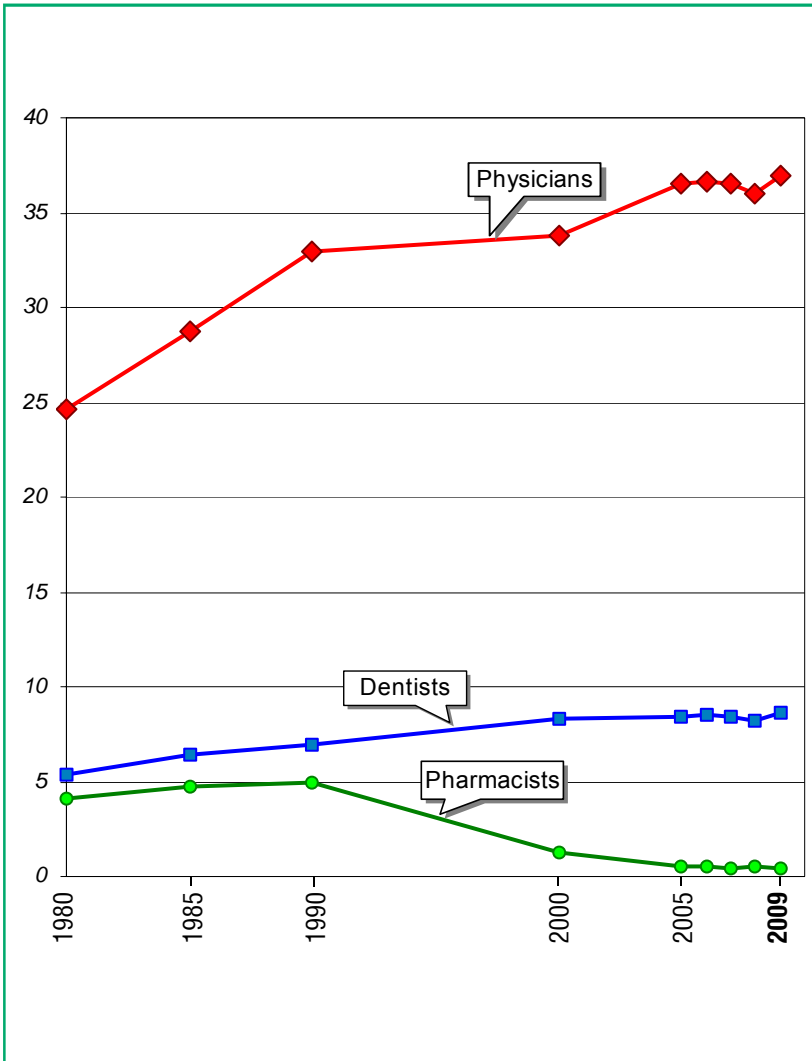
1. Medical Personnel¹⁾

	1980	1990	2000	2005	2008	2009
Number						
Physicians	21796	28497	27526	28197	27480	27988
Dentists	4839	6109	6778	6493	6288	6493
Pharmacists	3648	4366	1020	399	381	337
Auxiliary medical personnel Incl.:	77532	88387	49840	47657	48378	48099
med.assist.	7355	7617	3158	2466	2508	2534
midwives	7897	7544	4131	3455	3336	3289
nurses	45449	53810	31479	31235	32314	31961
clinical laboratory and X-ray technicians	6757	7604	5964	5935	5730	5932
dental technicians	2342	2858	1305	1401	1412	1350
pharmaceutical assist.	4057	4089	658	238	243	240
other	3675	4865	3145	2927	2835	2793
Per 10 000 population						
Physicians	24.6	32.9	33.8	36.5	36.1	37.0
Dentists	5.4	7.0	8.3	8.4	8.3	8.6
Pharmacists	4.1	5.0	1.3	0.5	0.5	0.4
Auxiliary medical personnel	87.3	102.0	61.2	61.7	63.6	63.6
Population per:						
one physician	407	304	296	274	277	270
one dentist	1834	1419	1202	1189	1210	1165

¹⁾ NSI data

Medical Personnel

(per 10000 population)



2. Physicians by Speciality¹⁾

<i>Specialties</i>	<i>2008</i>		<i>2009</i>	
	<i>number</i>	<i>per 10000 population</i>	<i>number</i>	<i>per 10000 population</i>
Physicians-total²⁾	27480	36.1	27988	37.0
incl.:				
internal medicine	1561	2.1	1496	2.0
gastroenterology	337	0.4	353	0.5
endocrinology	340	0.4	363	0.5
cardiology	978	1.3	1055	1.4
nephrology	292	0.4	305	0.4
haematology	122	0.2	140	0.2
pulmophthysiatry	518	0.7	525	0.7
pediatry	1405	1.8	1381	1.8
surgery	1300	1.7	1243	1.6
traumatology	640	0.8	677	0.9
urology	343	0.5	368	0.5
neurosurgery	140	0.2	150	0.2
infectious	213	0.3	202	0.3
gynecology	1382	1.8	1387	1.8
ophthalmology	615	0.8	635	0.8
oto-rhino-laryngology	530	0.7	541	0.7
neurology	1069	1.4	1070	1.4
psychiatry	506	0.7	565	0.7
dermato-venerology	377	0.5	381	0.5
anaesthesiology	1209	1.6	1182	1.6
roentgenology	869	1.1	886	1.2
laboratory physicians	578	0.8	575	0.8
physiotherapy and rehabilitation	460	0.6	433	0.6
urgent care medicine	966	1.3	1050	1.4

¹⁾ NSI data

²⁾ Physicians-oncologists are included in the respective general speciality – internists, surgeons etc.

V. ACTIVITIES OF THE HEALTH FACILITIES

1. Activities of the Inpatient Wards of the Hospital Health Care Facilities in 2009

<i>Types of establishments</i>	<i>Admitted</i>	<i>Discharged</i>	<i>Deceased</i>
Healthcare establishments for hospital care – total¹⁾	1794616	1769206	23650
Multiprofile hospitals	1257192	1234233	21622
Multiprofile hospital for active treatment	1257192	1234233	21622
Specialized hospitals	269681	268309	1266
Specialized hospital for active treatment	157528	156222	1117
Specialized hospital for continuing and long term treatment	13233	13261	9
Specialized hospital for continuing, long term treatment and rehabilitation	19804	19666	138
Specialized hospital for rehabilitation	79116	79160	2
Psychiatric hospitals	10700	10499	98
Private facilities for hospital care	257043	256165	664
Prophylactic centers	132061	131207	804
For pulmonary diseases	16074	15867	158
For dermato-venerological diseases	6022	6015	2
For oncological diseases	91184	90516	608
For psychiatric diseases	18781	18809	36

¹⁾ Excl. facilities of other administrations.

1. Activities of the Inpatient Wards of the Hospital Health Care Facilities in 2009

(continued from previous)

<i>Types of establishments</i>	<i>Bed days</i>	<i>Utiliza- tion of beds (days)</i>	<i>Turn- over of beds</i>	<i>Average length of stay (days)</i>	<i>Hospital morta- lity (%)</i>
Healthcare establishments for hospital care – total¹⁾	11287817	267	43	6.2	1.3
Multiprofile hospitals	7508305	277	47	5.9	1.7
Multiprofile hospital for active treatment	7508305	277	47	5.9	1.7
Specialized hospitals	2080978	269	35	7.7	0.5
Specialized hospital for active treatment	958571	276	46	6.0	0.7
Specialized hospital for continuing and long term treatment	127498	317	33	9.5	0.1
Specialized hospital for continuing, long term treat- ment and rehabilitation	216035	271	25	10.8	0.7
Specialized hospital for rehabilitation	778874	255	26	9.8	0.0
Psychiatric hospitals	771326	287	5	60.9	0.9
Private facilities for hospital care	927208	191	53	3.6	0.3
Prophylactic centers	1211667	294	32	9.1	0.6
For pulmonary diseases	180374	239	22	11.0	1.0
For dermato-venerological diseases	53200	244	28	8.8	0.0
For oncological diseases	528885	327	57	5.8	0.7
For psychiatric diseases	449208	294	13	22.9	0.2

¹⁾ Excl. facilities of other administrations.

2. Utilization, Turnover and Average Length of Stay in Health Care Facilities in 2009 by Type of Beds

<i>Type of bed</i>	<i>Utilization (days)</i>	<i>Turnover</i>	<i>Average length of stay (days)</i>
Total¹⁾	267	43	6.2
Incl.:			
Reanimation and intensive care	221	68	3.3
incl.: internal diseases	242	56	4.3
cardiological	251	94	2.7
pediatric	216	52	4.1
surgical	187	55	3.4
neurological	288	58	5.0
gynecological	229	120	1.9
intensive care ward	187	70	2.7
other	243	45	5.4
For active treatment	271	51	5.3
incl.: internal diseases	253	43	5.9
gastroenterological	273	49	5.6
endocrinological	271	47	5.8
cardiological	272	70	3.9
reumocardiological	293	55	5.3
pulmophtysiatrical	298	32	9.4
nephrological	274	44	6.2
haematological	321	58	5.5
pediatric	278	47	6.0
micropediatric	285	45	6.3
neonatological	278	58	4.8
surgical	255	54	4.8

¹⁾ Excl. facilities of other administrations.

2. Utilization, Turnover and Average Length of Stay in Health Care Facilities in 2009 by Type of Beds

(continued from previous)

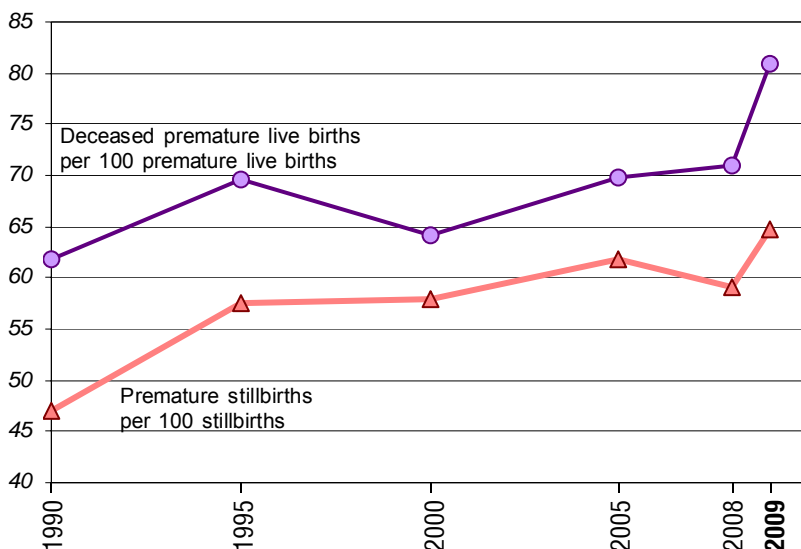
<i>Type of bed</i>	<i>Utilization (days)</i>	<i>Turnover</i>	<i>Average length of stay (days)</i>
orthopaedo-traumatological	255	50	5.1
urological	264	60	4.4
neurosurgical	294	46	6.3
gynecological	225	78	2.9
obstetrics	251	67	3.7
pathological pregnancy	270	66	4.1
infectious	248	46	5.4
ophthalmological	208	91	2.3
oto-rhino-laryngological	257	61	4.2
psychiatric	304	12	25.9
neurological	285	52	5.5
dermato-venerological	290	39	7.5
toxicological	273	60	4.6
oncological	393	60	6.6
For continuing and long term treatment	259	23	11.2
incl.: internal diseases	195	18	10.7
cardiological	292	40	7.4
pulmophthysiatrical	322	29	11.2
traumatological	300	27	11.3
psychiatric	274	3	78.6
neurological	283	41	6.9
for premature baby, hypotrophy, or birth defects	231	18	12.9
physiotherapeutic and rehabilitation	253	26	9.8
other	130	15	8.5
Day care	293	22	13.0
Home care	144	13	11.4

3. Women in childbirth served at inpatient healthcare facilities

	2000	2005	2008	2009
Women giving birth at healthcare facilities	71107	67845	72154	74762
incl. cases of:				
transverse or oblique presentation	234	327	398	481
of these: unattended	23	19	59	40
Narrow pelvis	857	715	867	1003
pelvic malpositions	1693	1952	1725	1998
complicated by:				
hemorrhages	1518	884	1303	1329
extragenital diseases	629	779	914	582
of these: cardiovascular	148	160	134	110
diabetes mellitus	79	128	160	187
Admitted women after childbirth outside health facilities	793	401	260	294
Total number of women in childbirth attended	71900	68246	72414	75056
of these: multiple gestation	614	582	847	1055
Distribution of women in childbirth by age				
up to 19 years of age	12669	9863	9912	9775
from 20 to 35 years of age	56185	54407	57387	59018
above 35 years of age	3046	3976	5115	6263

4. Premature, stillborn and deceased babies before their discharge from inpatient healthcare facilities

	1990	1995	2000	2005	2008	2009
Premature live births per 100 live births	6.6	8.0	8.9	8.9	8.3	8.5
Stillbirths per 100 births	0.6	0.7	0.8	0.8	0.8	0.8
Premature stillbirths per 100 stillbirths	47.1	57.5	58.0	61.9	59.1	64.7
Deceased live births per 100 live births	0.5	0.6	0.6	0.5	0.4	0.4
Deceased premature live births per 100 premature births	4.6	5.1	4.4	3.8	3.3	3.9
Deceased premature live births per 100 deceased live births	61.9	69.7	64.2	69.8	70.9	81.0

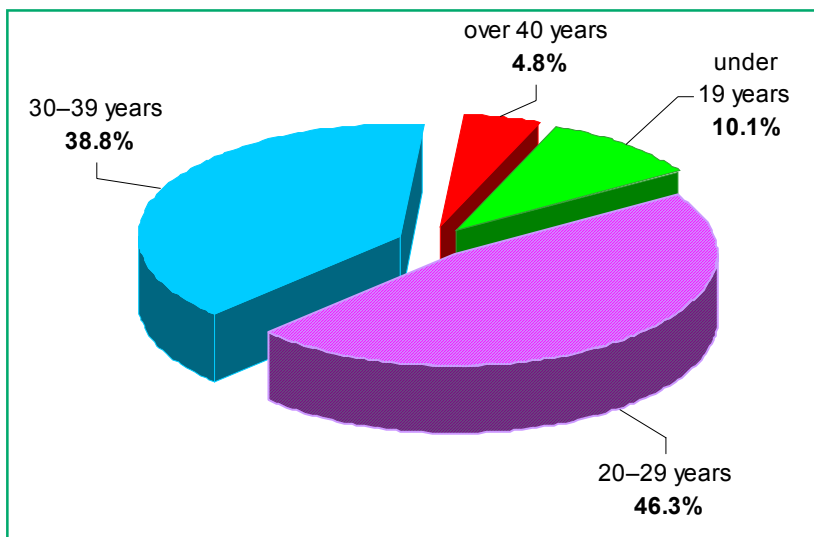


5. Medical Abortions in Health Facilities during 2009 by Age Group and Type of Abortion

(Number)

Age group	Total	Type of abortions			
		Medical indicated	Spontaneous	Illegal	Legal
Total	33733	2450	11451	1	19831
< 15	166	42	90	–	34
15–19	3248	161	1290	–	1797
20–24	7169	218	2359	1	4591
25–29	8437	348	2948	–	5141
30–34	7982	391	2700	–	4891
35–39	5114	961	1530	–	2623
40–44	1523	311	501	–	711
45–49	94	18	33	–	43
> 50	–	–	–	–	–

Medical Abortions by Age



6. Medical Abortions in Health Facilities

(Number)

	1980	1985	1990	1995	2000	2007	2008
Total	156056	132269	144644	97092	61378	36593	33733
incl:							
medically indicated	3830	5586	4352	4073	2567	2800	2450
spontaneous abortions	15787	14245	12601	9851	10626	11662	11451
illegal abortions	180	228	91	69	29	2	1
legal abortions	136259	112210	127600	83099	48156	22129	19831

7. Persons Served by Calls attended and ambulatory examinations in need of urgent medical care in the Centers for Urgent Medical Care, Urgent Wards and Urgent Portals

	2008		2009	
	Number	(%)	Number	(%)
Persons attended – total	2410898	100.0	2538420	100.0
Incl.:				
Centers for urgent medical care	1319793	54.7	1355735	53.4
incl. at calls performed	731347	30.3	727635	28.7
Urgent wards	761421	31.6	827747	32.6
Urgent portals	329684	13.7	354938	14.0

8. Number and Type of Surgeries of Patients, Discharged from Hospitals in 2009

<i>Type of surgery</i>	<i>Discharged surgical patients</i>	<i>Incl.:</i>		<i>Lethality (%)</i>
		<i>with complications</i>	<i>dead</i>	
Total	522832	1941	3512	0.7
Surgery of gastrointestinal tract	75036	435	1286	1.7
Apendectomy due to acute appendicitis	9876	35	7	0.1
Herniotomy due to unobstructed hernia	21053	37	11	0.1
Obstetrics-gynecological surgeries	125625	257	16	0.0
Endocrine surgeries	3877	7	2	0.1
Orthopaedics-traumatology surgeries	75842	164	332	0.4
Chest surgeries	17073	121	187	1.1
Urological surgeries	41273	114	152	0.4
Otho-Rhino-Larhingological surgeries	37200	38	27	0.1
Tonsillectomy	7594	8	-	-
Ophtalmological surgeries	49448	9	2	0.0
Catharacta	26938	3	2	0.0
Neurosurgeries	8522	77	414	4.9
Cardiovascular surgeries	8488	319	319	3.8
Vascular surgeries	10378	125	174	1.7
Facial and dental surgeries	7476	3	2	0.0
Plastic, reconstructive and esthetic surgeries	5112	5	30	0.6
Other surgical interventions	57482	267	569	1.0

**9. Number and Type of Surgeries of Patients,
Discharged from Hospitals in 2009
by type of healthcare facility**

<i>Type of surgery</i>	<i>Total</i>	<i>Multiprofile hospitals for active treatment</i>	<i>Specialized hospitals for active treatment</i>
Total	522832	333829	43553
Surgery of gastrointestinal tract	75036	51276	1274
Apendectomy due to acute appendicitis	9876	8402	–
Herniotomy due to unobstructed hernia	21053	13732	88
Obstetrics-gynecological surgeries	125625	76502	20564
Endocrine surgeries	3877	1839	875
Orthopaedics-traumatology surgeries	75842	49294	3101
Chest surgeries	17073	8066	3760
Urological surgeries	41273	29739	544
Otho-Rhino-Larhingological surgeries	37200	28234	532
Tonsillectomy	7594	4528	10
Ophtalmological surgeries	49448	24667	3137
Catharacta	26938	12716	1402
Neurosurgeries	8522	7645	222
Cardiovascular surgeries	8488	2097	4034
Vascular surgeries	10378	5673	2368
Facial and dental surgeries	7476	4784	1633
Plastic, reconstructive and esthetic surgeries	5112	3382	33
Other surgical interventions	57482	40631	1476

9. Number and Type of Surgeries of Patients, Discharged from Hospitals in 2009 by type of healthcare facility

(continued from previous)

<i>Type of surgery</i>	<i>Private facilities for hospital care</i>	<i>Other facilities for hospital care</i>	<i>Prophylactic centers</i>
Total	120823	7259	17368
Surgery of gastrointestinal tract	19550	1014	1922
Apendectomy due to acute appendicitis	1425	40	9
Herniotomy due to unobstructed hernia	6582	468	183
Obstetrics-gynecological surgeries	22403	665	5491
Endocrine surgeries	913	88	162
Orthopaedics-traumatology surgeries	21147	2293	7
Chest surgeries	1306	149	3792
Urological surgeries	9265	391	1334
Otho-Rhino-Larhingological surgeries	7171	957	306
Tonsillectomy	2802	244	10
Ophtalmological surgeries	21159	485	–
Catharacta	12566	254	–
Neurosurgeries	655	–	–
Cardiovascular surgeries	2203	154	–
Vascular surgeries	1851	347	139
Facial and dental surgeries	1049	10	–
Plastic, reconstructive and esthetic surgeries	1494	92	111
Other surgical interventions	10657	614	4104

VI. ECONOMICAL INDICATORS OF THE HEALTH FACILITIES FOR 2009

(in leva)

<i>Types of health facilities</i>	<i>Average costs:</i>				
	Per patient	Per bed	Per bed day	Per medicine day	Per food day
Multiprofile hospital for active treatment:					
Regional	595	28150	98.53	21.16	2.34
Municipal	489	21426	86.93	12.86	1.97
City	523	24674	94.16	15.54	2.92
Specialized hospital for active treatment:					
Pulmonary diseases	464	11846	38.27	6.49	2.94
Gynecological diseases	544	31748	122.35	23.23	2.18
State psychiatric hospitals	1484	7007	24.40	2.00	2.00
Prophylactic centers with outpatient department for:					
Pulmonary diseases	766	16631	69.57	11.11	4.02
Oncological diseases	969	55107	167.75	88.14	2.47
Dermato-venereological diseases	620	17207	70.51	7.64	3.06
Psychiatric diseases	628	8512	27.79	3.28	2.16

VII. REVIEW BY REGIONS

1. Population on 31.XII.2009¹⁾

<i>Regions</i>	<i>Total</i>	<i>Male</i>	<i>Female</i>	<i>Urban</i>	<i>Rural</i>
Number					
Total	7563710	3659311	3904399	5401214	2162496
Blagoevgrad	327885	160120	167765	193341	134544
Bourgas	422319	205692	216627	310754	111565
Varna	465465	226704	238761	379844	85621
V. Tarnovo	275395	131877	143518	187215	88180
Vidin	108067	52086	55981	66285	41782
Vratza	196829	95378	101451	113467	83362
Gabrovo	130001	62690	67311	104150	25851
Dobrich	199705	97382	102323	133648	66057
Kardgali	154719	76028	78691	64660	90059
Kjustendil	145577	70587	74990	98805	46772
Lovetch	151153	73734	77419	93493	57660
Montana	155899	75158	80741	98743	57156
Pazardgik	290614	142096	148518	180518	110096
Pernik	136249	65690	70559	103610	32639
Pleven	290589	141312	149277	190481	100108
Plovdiv	701684	337639	364045	522436	179248
Razgrad	132740	64399	68341	61363	71377
Rousse	249144	120740	128404	189072	60072
Silistra	127659	62743	64916	57576	70083
Sliven	204887	99537	105350	135070	69817
Smoljan	124795	60267	64528	68129	56666
Sofia-capital	1249798	594449	655349	1192296	57502
Sofia	253010	123531	129479	151605	101405
St. Zagora	350925	170393	180532	241723	109202
Targovishte	129675	63053	66622	65974	63701
Haskovo	256408	124424	131984	179987	76421
Shoumen	194090	94137	99953	121918	72172
Yambol	138429	67465	70964	95051	43378

¹⁾ NSI data

1. Population on 31.XII.2009

(continued from previous)

<i>Regions</i>	<i>Total</i>	<i>Male</i>	<i>Female</i>	<i>Urban</i>	<i>Rural</i>
Percentage (%)					
Total	100.0	48.4	51.6	71.4	28.6
Blagoevgrad	100.0	48.8	51.2	59.0	41.0
Bourgas	100.0	48.7	51.3	73.6	26.4
Varna	100.0	48.7	51.3	81.6	18.4
V. Tarnovo	100.0	47.9	52.1	68.0	32.0
Vidin	100.0	48.2	51.8	61.3	38.7
Vratza	100.0	48.5	51.5	57.6	42.4
Gabrovo	100.0	48.2	51.8	80.1	19.9
Dobrich	100.0	48.8	51.2	66.9	33.1
Kardgali	100.0	49.1	50.9	41.8	58.2
Kjustendil	100.0	48.5	51.5	67.9	32.1
Lovetch	100.0	48.8	51.2	61.9	38.1
Montana	100.0	48.2	51.8	63.3	36.7
Pazardgik	100.0	48.9	51.1	62.1	37.9
Pernik	100.0	48.2	51.8	76.0	24.0
Pleven	100.0	48.6	51.4	65.5	34.5
Plovdiv	100.0	48.1	51.9	74.5	25.5
Razgrad	100.0	48.5	51.5	46.2	53.8
Rousse	100.0	48.5	51.5	75.9	24.1
Silistra	100.0	49.1	50.9	45.1	54.9
Sliven	100.0	48.6	51.4	65.9	34.1
Smoljan	100.0	48.3	51.7	54.6	45.4
Sofia-capital	100.0	47.6	52.4	95.4	4.6
Sofia	100.0	48.8	51.2	59.9	40.1
St. Zagora	100.0	48.6	51.4	68.9	31.1
Targovishte	100.0	48.6	51.4	50.9	49.1
Haskovo	100.0	48.5	51.5	70.2	29.8
Shoumen	100.0	48.5	51.5	62.8	37.2
Yambol	100.0	48.7	51.3	68.7	31.3

2. Live Births in 2009¹⁾

<i>Regions</i>	<i>Total</i>	<i>Urban</i>	<i>Rural</i>	<i>Total</i>	<i>Urban</i>	<i>Rural</i>
	Number			Per 1000 population		
Total	80956	60664	20292	10.7	11.2	9.3
Blagoevgrad	3573	2166	1407	10.9	11.2	10.4
Bourgas	5180	3793	1387	12.3	12.2	12.4
Varna	5900	4912	988	12.7	13.0	11.5
V. Tarnovo	2503	1867	636	9.1	10.0	7.1
Vidin	854	636	218	7.8	9.5	5.1
Vratza	1787	1119	668	9.0	9.8	7.9
Gabrovo	1045	878	167	8.0	8.4	6.4
Dobrich	2105	1400	705	10.5	10.4	10.6
Kardjali	1719	782	937	11.1	12.1	10.3
Kjustendil	1227	976	251	8.4	9.8	5.3
Lovetch	1413	938	475	9.3	10.0	8.2
Montana	1485	1036	449	9.5	10.4	7.8
Pazardgik	3129	1993	1136	10.7	11.0	10.3
Pernik	1185	1036	149	8.7	10.0	4.5
Pleven	2738	1774	964	9.4	9.3	9.5
Plovdiv	7674	6002	1672	10.9	11.5	9.3
Razgrad	1322	608	714	9.9	9.8	9.9
Rousse	2298	1862	436	9.2	9.8	7.2
Silistra	1245	494	751	9.7	8.5	10.7
Sliven	2829	1735	1094	13.8	12.8	15.6
Smoljan	1059	671	388	8.4	9.8	6.8
Sofia-capital	15309	14762	547	12.3	12.4	9.5
Sofia	2337	1609	728	9.2	10.6	7.2
St. Zagora	3694	2663	1031	10.5	11.0	9.4
Targovishte	1366	697	669	10.5	10.5	10.4
Haskovo	2483	1913	570	9.6	10.6	7.4
Shoumen	2084	1280	804	10.7	10.5	11.1
Yambol	1413	1062	351	10.1	11.1	8.0

¹⁾ NSI data

3. Deaths in 2009¹⁾

<i>Regions</i>	<i>Total</i>	<i>Urban</i>	<i>Rural</i>	<i>Total</i>	<i>Urban</i>	<i>Rural</i>
	Number			Per 1000 population		
Total	108068	64335	43733	14.2	11.9	20.1
Blagoevgrad	3719	1903	1816	11.3	9.8	13.4
Bourgas	5415	3496	1919	12.8	11.3	17.2
Varna	5671	4008	1663	12.2	10.6	19.4
V. Tarnovo	4291	2115	2176	15.5	11.3	24.4
Vidin	2350	918	1432	21.5	13.7	33.8
Vratza	3643	1414	2229	18.4	12.4	26.5
Gabrovo	2075	1329	746	15.8	12.7	28.6
Dobrich	3016	1619	1397	15.0	12.1	21.0
Kardgali	1754	629	1125	11.3	9.7	12.4
Kjustendil	2551	1322	1229	17.4	13.3	26.0
Lovetch	2612	1173	1439	17.1	12.5	24.7
Montana	3126	1309	1817	19.9	13.2	31.4
Pazardgik	3849	2148	1701	13.2	11.9	15.4
Pernik	2380	1485	895	17.4	14.3	27.3
Pleven	4908	2501	2407	16.8	13.1	23.8
Plovdiv	9385	5992	3393	13.4	11.5	18.8
Razgrad	1912	801	1111	14.3	13.0	15.5
Rousse	3798	2415	1383	15.2	12.7	22.8
Silistra	1926	796	1130	15.0	13.7	16.0
Sliven	2942	1658	1284	14.3	12.2	18.3
Smoljan	1524	679	845	12.1	9.9	14.7
Sofia-capital	15078	14274	804	12.1	12.0	14.0
Sofia	4121	1914	2207	16.2	12.6	21.7
St. Zagora	5281	2930	2351	15.0	12.1	21.4
Targovishte	1926	798	1128	14.8	12.0	17.6
Haskovo	3879	2137	1742	15.1	11.8	22.7
Shoumen	2669	1470	1199	13.7	12.0	16.5
Yambol	2267	1102	1165	16.2	11.5	26.5

¹⁾ NSI data

4. Natural Growth of Population in 2009¹⁾

<i>Regions</i>	<i>Total</i>	<i>Urban</i>	<i>Rural</i>	<i>Total</i>	<i>Urban</i>	<i>Rural</i>
	Number			Per 1000 population		
Total	-27112	-3671	-23441	-3.5	-0.7	-10.8
Blagoevgrad	-146	263	-409	-0.4	1.4	-3.0
Bourgas	-235	297	-532	-0.5	0.9	-4.8
Varna	229	904	-675	0.5	2.4	-7.9
V. Tarnovo	-1788	-248	-1540	-6.4	-1.3	-17.3
Vidin	-1496	-282	-1214	-13.7	-4.2	-28.7
Vratza	-1856	-295	-1561	-9.4	-2.6	-18.6
Gabrovo	-1030	-451	-579	-7.8	-4.3	-22.2
Dobrich	-911	-219	-692	-4.5	-1.7	-10.4
Kardjali	-35	153	-188	-0.2	2.4	-2.1
Kjustendil	-1324	-346	-978	-9.0	-3.5	-20.7
Lovetch	-1199	-235	-964	-7.8	-2.5	-16.5
Montana	-1641	-273	-1368	-10.4	-2.8	-23.6
Pazardgik	-720	-155	-565	-2.5	-0.9	-5.1
Pernik	-1195	-449	-746	-8.7	-4.3	-22.8
Pleven	-2170	-727	-1443	-7.4	-3.8	-14.3
Plovdiv	-1711	10	-1721	-2.5	0.0	-9.5
Razgrad	-590	-193	-397	-4.4	-3.2	-5.6
Rousse	-1500	-553	-947	-6.0	-2.9	-15.6
Silistra	-681	-302	-379	-5.3	-5.2	-5.3
Sliven	-113	77	-190	-0.5	0.6	-2.7
Smoljan	-465	-8	-457	-3.7	-0.1	-7.9
Sofia-capital	231	488	-257	0.2	0.4	-4.5
Sofia	-1784	-305	-1479	-7.0	-2.0	-14.5
St. Zagora	-1587	-267	-1320	-4.5	-1.1	-12.0
Targovishte	-560	-101	-459	-4.3	-1.5	-7.2
Haskovo	-1396	-224	-1172	-5.5	-1.2	-15.3
Shoumen	-585	-190	-395	-3.0	-1.5	-5.4
Yambol	-854	-40	-814	-6.1	-0.4	-18.5

¹⁾ NSI data

5. Infant Mortality in 2009¹⁾

<i>Regions</i>	<i>Total</i>	<i>Urban</i>	<i>Rural</i>	<i>Total</i>	<i>Urban</i>	<i>Rural</i>
	Number			Per 1000 live births		
Total	729	468	261	9.0	7.7	12.9
Blagoevgrad	17	5	12	4.8	2.3	8.5
Bourgas	55	36	19	10.6	9.5	13.7
Varna	37	26	11	6.3	5.3	11.1
V. Tarnovo	24	15	9	9.6	8.0	14.2
Vidin	10	6	4	11.7	9.4	18.3
Vratza	15	7	8	8.4	6.3	12.0
Gabrovo	9	7	2	8.6	8.0	12.0
Dobrich	27	17	10	12.8	12.1	14.2
Kardgali	15	9	6	8.7	11.5	6.4
Kjustendil	7	6	1	5.7	6.1	4.0
Lovetch	18	13	5	12.7	13.9	10.5
Montana	14	9	5	9.4	8.7	11.1
Pazardgik	24	16	8	7.7	8.0	7.0
Pernik	11	11	–	9.3	10.6	–
Pleven	32	14	18	11.7	7.9	18.7
Plovdiv	79	51	28	10.3	8.5	16.7
Razgrad	14	6	8	10.6	9.9	11.2
Rousse	13	10	3	5.7	5.4	6.9
Silistra	14	2	12	11.2	4.0	16.0
Sliven	61	33	28	21.6	19.0	25.6
Smoljan	7	6	1	6.6	8.9	2.6
Sofia-capital	85	80	5	5.6	5.4	9.1
Sofia	20	14	6	8.6	8.7	8.2
St. Zagora	44	29	15	11.9	10.9	14.5
Targovishte	15	5	10	11.0	7.2	14.9
Haskovo	25	20	5	10.1	10.5	8.8
Shoumen	24	7	17	11.5	5.5	21.1
Yambol	13	8	5	9.2	7.5	14.2

¹⁾ NSI data

6. Registered Cases of Certain Infectious Diseases Subject to Obligatory Reporting in 2009

(per 100 000 population)

<i>Regions</i>	<i>Scarlet fever</i>	<i>Pertussis</i>	<i>Chicken pox</i>	<i>Mumps</i>	<i>Lyme disease</i>
Total	65.1	3.3	383.9	14.6	11.6
Blagoevgrad	21.6	0.6	148.0	5.8	14.9
Bourgas	33.9	4.3	245.3	22.1	1.9
Varna	116.3	4.3	573.7	41.6	18.3
V. Tarnovo	45.2	-	386.3	1.8	17.7
Vidin	24.7	0.9	311.4	0.9	0.9
Vratza	23.7	10.1	166.4	1.0	12.6
Gabrovo	92.4	-	608.6	-	35.1
Dobrich	50.3	13.0	204.9	3.0	11.0
Kardgali	5.1	-	137.7	1.9	-
Kjustendil	36.8	2.7	493.3	5.5	2.7
Lovetch	61.1	16.4	302.7	2.0	3.3
Montana	61.1	5.7	310.0	-	34.4
Pazardgik	6.2	0.3	165.7	-	0.7
Pernik	76.7	-	236.8	2.9	21.9
Pleven	17.8	-	525.6	20.9	14.7
Plovdiv	71.6	-	422.3	22.5	4.3
Razgrad	51.6	-	225.3	-	19.5
Rousse	58.4	0.4	696.3	3.2	22.4
Silistra	25.7	-	387.1	-	12.5
Sliven	39.9	5.3	368.9	46.2	10.2
Smoljan	48.5	-	206.1	4.8	-
Sofia-capital	146.4	6.6	548.8	4.0	5.7
Sofia	35.9	5.9	184.5	4.3	3.9
St. Zagora	76.9	2.3	425.6	68.7	24.7
Targovishte	57.5	-	780.4	39.1	40.6
Haskovo	16.7	-	256.5	10.9	20.2
Shoumen	36.5	3.6	233.6	1.0	11.8
Yambol	45.1	0.7	200.6	44.4	10.0

6. Registered Cases of Certain Infectious Diseases Subject to Obligatory Reporting in 2009

(per 100 000 population)

<i>Regions</i>	<i>Shigellosis</i>	<i>Infectious hepatitis</i>	<i>Meningitis and meningoencephalitis</i>	
			<i>bacterial</i>	<i>viral</i>
Total	9.9	24.9	2.3	3.6
Blagoevgrad	13.7	14.0	0.9	2.1
Bourgas	9.5	21.1	1.2	1.7
Varna	8.4	22.0	2.4	3.2
V. Tarnovo	6.9	13.0	1.1	4.0
Vidin	2.7	13.7	-	1.8
Vratza	18.2	24.2	3.0	0.5
Gabrovo	10.7	32.1	6.1	2.3
Dobrich	28.9	43.4	8.0	2.5
Kardgali	2.6	5.1	1.3	1.9
Kjustendil	11.6	17.7	0.7	2.0
Lovetch	13.1	24.3	1.3	3.9
Montana	3.8	10.8	1.3	4.5
Pazardgik	6.5	25.0	1.0	-
Pernik	5.8	15.3	3.7	7.3
Pleven	4.8	15.4	3.1	4.4
Plovdiv	4.8	16.2	3.4	5.7
Razgrad	3.0	33.7	2.2	0.7
Rousse	-	18.4	2.4	0.4
Silistra	15.6	42.8	2.3	-
Sliven	5.8	127.4	2.4	4.4
Smoljan	6.4	8.8	2.4	7.2
Sofia-capital	4.6	10.3	1.8	3.8
Sofia	5.1	19.3	0.8	9.1
St. Zagora	32.7	52.5	2.6	1.7
Targovishte	4.6	31.4	0.8	2.3
Haskovo	7.4	17.1	3.9	6.2
Shoumen	15.9	16.9	2.6	2.6
Yambol	65.9	129.7	2.9	11.5

7. Registered Cases of Active Tuberculosis in 2009

(per 100 000 population)

<i>Regions</i>	<i>Total</i>	<i>incl. new cases</i>
Total	109.4	33.6
Blagoevgrad	116.3	29.8
Bourgas	90.8	35.6
Varna	95.4	21.1
V. Tarnovo	93.0	21.7
Vidin	85.2	74.2
Vratza	167.5	64.1
Gabrovo	106.9	44.3
Dobrich	116.2	27.9
Kardgali	94.6	30.3
Kjustendil	171.3	64.1
Lovetch	123.4	37.4
Montana	91.0	43.3
Pazardgik	99.1	26.4
Pernik	56.3	40.2
Pleven	74.5	24.6
Plovdiv	146.5	34.3
Razgrad	127.2	43.4
Rousse	71.9	27.2
Silistra	54.5	38.9
Sliven	71.0	34.5
Smoljan	59.7	20.7
Sofia-capital	131.8	31.9
Sofia	140.8	46.9
St. Zagora	94.8	32.9
Targovishte	36.0	31.4
Haskovo	74.1	26.8
Shoumen	47.2	18.0
Yambol	277.3	40.1

8. Registered Cases of Malignant Neoplasms in 2009

(per 100 000 population)

<i>Regions</i>	<i>Total</i>	<i>incl. new cases</i>
Total	3453.8	438.3
Blagoevgrad	2187.4	375.5
Bourgas	2956.3	455.2
Varna	3162.6	471.4
V. Tarnovo	3714.5	391.0
Vidin	2628.5	359.0
Vratza	3944.2	468.1
Gabrovo	3856.3	435.3
Dobrich	2507.5	441.7
Kardgali	1976.0	361.1
Kjustendil	2779.2	408.0
Lovetch	2977.4	408.4
Montana	3228.6	412.5
Pazardgik	3772.3	391.0
Pernik	2681.8	421.6
Pleven	3931.2	490.7
Plovdiv	5008.3	461.1
Razgrad	2800.6	333.1
Rousse	4216.4	543.2
Silistra	2904.4	394.1
Sliven	2603.0	415.6
Smoljan	3538.7	387.5
Sofia-capital	3952.9	446.3
Sofia	2309.0	373.4
St. Zagora	3380.1	499.4
Targovishte	3098.4	400.1
Haskovo	3277.0	483.1
Shoumen	3842.7	434.3
Yambol	2567.6	489.4

9. Registered Cases of Some Venereal and Skin Infections in 2009

(per 100 000 population)

<i>Regions</i>	<i>Syphilis</i>		<i>Gonorrhoea</i>	
	<i>total</i>	<i>incl. new cases</i>	<i>total</i>	<i>incl. new cases</i>
Total	44.7	5.9	2.7	2.5
Blagoevgrad	18.3	1.5	1.5	1.2
Bourgas	16.6	6.2	8.5	8.5
Varna	25.2	4.7	1.3	1.3
V. Tarnovo	44.1	6.5	-	-
Vidin	-	-	0.9	0.9
Vratza	33.8	9.1	-	-
Gabrovo	77.9	19.9	3.1	3.1
Dobrich	13.0	4.5	1.5	1.5
Kardgali	3.9	1.3	-	-
Kjustendil	8.9	8.9	-	-
Lovetch	7.9	7.9	-	-
Montana	14.0	6.4	-	-
Pazardgik	-	-	-	-
Pernik	4.4	4.4	-	-
Pleven	25.6	7.9	0.3	0.3
Plovdiv	202.2	13.2	9.4	9.2
Razgrad	2.2	2.2	3.7	3.7
Rousse	0.4	0.4	1.2	1.2
Silistra	29.6	3.9	-	-
Sliven	50.1	15.6	1.9	1.9
Smoljan	-	-	0.8	0.8
Sofia-capital	27.3	2.6	0.2	0.2
Sofia	-	-	5.9	5.9
St. Zagora	104.2	11.4	1.1	0.3
Targovishte	2.3	-	-	-
Haskovo	111.8	8.1	2.3	2.3
Shoumen	24.1	3.1	20.5	16.9
Yambol	59.5	19.3	0.7	0.7

**10. Patients Under Observation of Psychiatric Facilities,
Wards and Consultations by Type of Disease
on 31.XII.2009**

<i>Regions</i>	<i>Total</i>		<i>Schizophrenia, schizotypal and delusional disorders</i>		<i>Incl.: Schizophrenia</i>	
	number	per 100000 population	number	per 100000 population	number	per 100000 population
Total	171717	2270.3	38627	510.7	28339	374.7
Blagoevgrad	452	137.9	255	77.8	251	76.6
Bourgas	26222	6209.1	3841	909.5	1992	471.7
Varna	-	-	-	-	-	-
V. Tarnovo	6652	2415.4	1421	516.0	1278	464.1
Vidin	3447	3189.7	674	623.7	455	421.0
Vratza	6885	3498.0	1006	511.1	758	385.1
Gabrovo	1814	1395.4	969	745.4	969	745.4
Dobrich	2137	1070.1	932	466.7	871	436.1
Kardgali	4554	2943.4	1208	780.8	1015	656.0
Kjustendil	2526	1735.2	563	386.7	557	382.6
Lovetch	4801	3176.3	779	515.4	487	322.2
Montana	2232	1431.7	567	363.7	482	309.2
Pazardgik	-	-	-	-	-	-
Pernik	6403	4699.5	1294	949.7	1130	829.4
Pleven	8338	2869.3	1128	388.2	1085	373.4
Plovdiv	17174	2447.5	4042	576.0	3129	445.9
Razgrad	4845	3650.0	804	605.7	744	560.5
Rousse	5513	2212.8	1359	545.5	1021	409.8
Silistra	4556	3568.9	643	503.7	551	431.6
Sliven	5833	2846.9	1129	551.0	1005	490.5
Smoljan	4158	3331.9	1010	809.3	869	696.3
Sofia-capital	21909	1753.0	7027	562.3	4334	346.8
Sofia	5807	2295.2	1490	588.9	1062	419.7
St. Zagora	7177	2045.2	1890	538.6	962	274.1
Targovishte	6313	4868.3	1476	1138.2	929	716.4
Haskovo	5023	1959.0	1486	579.5	972	379.1
Shoumen	1967	1013.4	839	432.3	774	398.8
Yambol	4979	3596.8	795	574.3	657	474.6

10. Patients Under Observation of Psychiatric Facilities, Wards and Consultations by Type of Disease on 31.XII.2009

(continued from previous)

<i>Regions</i>	<i>Mood [affective] disorders</i>		<i>Neurotic, stress-related and somato-form disorders</i>		<i>Mental retardation</i>	
	number	per 100000 population	number	per 100000 population	number	per 100000 population
Total	29380	388.4	16740	221.3	39283	519.4
Blagoevgrad	87	26.5	15	4.6	25	7.6
Bourgas	2744	649.7	5101	1207.9	5193	1229.6
Varna	-	-	-	-	-	-
V. Tarnovo	1689	613.3	551	200.1	1182	429.2
Vidin	694	642.2	322	298.0	898	831.0
Vratza	889	451.7	645	327.7	2901	1473.9
Gabrovo	682	524.6	140	107.7		0.0
Dobrich	311	155.7	46	23.0	372	186.3
Kardgali	656	424.0	947	612.1	921	595.3
Kjustendil	1126	773.5	71	48.8	404	277.5
Lovetch	815	539.2	209	138.3	700	463.1
Montana	238	152.7	399	255.9	399	255.9
Pazardgik	-	-	-	-	-	-
Pernik	1238	908.6	12	8.8	1405	1031.2
Pleven	1362	468.7	813	279.8	2074	713.7
Plovdiv	3035	432.5	1400	199.5	4734	674.7
Razgrad	841	633.6	599	451.3	1213	913.8
Rousse	994	399.0	223	89.5	1343	539.0
Silistra	457	358.0	502	393.2	1872	1466.4
Sliven	545	266.0	600	292.8	1976	964.4
Smoljan	735	589.0	400	320.5	1019	816.5
Sofia-capital	6178	494.3	1130	90.4	2912	233.0
Sofia	742	293.3	418	165.2	1195	472.3
St. Zagora	1320	376.1	529	150.7	1802	513.5
Targovishte	767	591.5	739	569.9	1283	989.4
Haskovo	497	193.8	493	192.3	1273	496.5
Shoumen	249	128.3	37	19.1	344	177.2
Yambol	489	353.2	399	288.2	1843	1331.4

11. Hospitalized Patients (discharged and deceased) in Hospitals in 2009

<i>Regions</i>	<i>Number</i>	<i>Per 100 000 population</i>
Total	1958897	25825.5
Blagoevgrad	64189	19549.9
Bourgas	80852	19178.3
Varna	111295	23967.3
V. Tarnovo	59251	21432.2
Vidin	17894	16388.2
Vratza	58613	29563.0
Gabrovo	35463	27080.1
Dobrich	29945	14927.6
Kardgali	30506	19635.3
Kjustendil	41446	28280.4
Lovetch	36574	24012.4
Montana	43947	27974.8
Pazardgik	86158	29549.3
Pernik	20561	15024.6
Pleven	80214	27429.9
Plovdiv	251865	35833.7
Razgrad	29005	21708.2
Rousse	59341	23718.4
Silistra	21709	16908.6
Sliven	48719	23681.5
Smoljan	31461	25035.4
Sofia-capital	414489	33200.8
Sofia	76130	30017.9
St. Zagora	85095	24160.4
Targovishte	34898	26751.2
Haskovo	48138	18679.3
Shoumen	33479	17187.7
Yambol	27660	19821.0

12. Primari Disability of Persons in 2009

(number)

<i>Regions</i>	<i>Persons under 16 years age</i>		<i>Persons over 16 years age</i>	
	number	per 1000 persons under 16 years age	number	per 1000 persons over 16 years age
Total	3578	3.3	69078	10.7
Blagoevgrad	43	0.8	2113	7.6
Burgas	159	2.4	2234	6.3
Varna	217	3.0	3966	10.1
V. Tarnovo	127	3.6	2301	9.5
Vidin	53	3.7	1186	12.5
Vratza	114	3.9	2803	16.6
Gabrovo	50	3.1	1600	14.0
Dobrich	76	2.6	1392	8.1
Kardgali	72	2.9	1102	8.4
Kjustendil	61	3.3	1556	12.2
Lovetch	72	3.3	1501	11.5
Montana	77	3.5	1553	11.5
Pazardgik	152	3.3	2462	10.0
Pernik	62	3.8	1642	13.6
Pleven	165	4.0	3028	12.1
Plovdiv	385	3.9	7870	13.1
Razgrad	82	3.9	1304	11.6
Rousse	75	2.3	2032	9.3
Silistra	60	3.2	1970	17.9
Sliven	117	3.1	1799	10.7
Smoljan	28	1.7	876	8.0
Sofia-capital	584	3.4	10859	10.1
Sofia	200	5.6	2436	11.2
St. Zagora	331	6.4	3381	11.3
Targovishte	28	1.3	862	7.9
Haskovo	57	1.6	2063	9.3
Shoumen	80	2.6	1915	11.7
Yambol	51	2.5	1272	10.7

13. Beds in Hospitals on 31.XII.2009

<i>Regions</i>	<i>Number</i>	<i>Per 10000 population</i>
Total¹⁾	45906	60.7
Blagoevgrad	1456	44.4
Bourgas	1868	44.2
Varna	2110	45.3
V. Tarnovo	1504	54.6
Vidin	470	43.5
Vratza	1017	51.7
Gabrovo	929	71.5
Dobrich	899	45.0
Kardgali	905	58.5
Kjustendil	1199	82.4
Lovetch	1264	83.6
Montana	960	61.6
Pazardgik	1822	62.7
Pernik	602	44.2
Pleven	1635	56.3
Plovdiv	4577	65.2
Razgrad	576	43.4
Rousse	1189	47.7
Silistra	567	44.4
Sliven	1264	61.7
Smoljan	753	60.3
Sofia-capital	9281	74.3
Sofia	1519	60.0
St. Zagora	2522	71.9
Targovishte	714	55.1
Haskovo	989	38.6
Shoumen	715	36.8
Yambol	554	40.0

¹⁾ Beds belonging to other administrations are included, but not allocated by regions.

14. Beds¹⁾ in Hospitals and Prophylactic centers on 31.XII.2009 by Type²⁾

Regions	Total	Beds for active and intensive care	Beds for continuing care	Psychiatric beds	Other beds	incl:	
						physiotherapeutic and rehabilitation	day care
Number							
Total	47995	36460	871	5179	5485	5392	93
Blagoevgrad	1738	1203	-	136	399	394	5
Bourgas	2282	1318	20	268	676	651	25
Varna	2265	1931	-	153	181	173	8
V. Tarnovo	1885	1416	4	235	230	230	-
Vidin	470	441	-	29	-	-	-
Vratza	1427	1090	131	140	66	66	-
Gabrovo	929	743	36	130	20	20	-
Dobrich	994	657	-	245	92	92	-
Kardgali	965	645	-	320	-	-	-
Kjustendil	1199	793	-	30	376	376	-
Lovetch	1264	711	-	530	23	23	-
Montana	960	757	-	48	155	155	-
Pazardgik	1862	1444	110	130	178	178	-
Pernik	602	457	75	25	45	45	-
Pleven	1635	1463	10	105	57	57	-
Plovdiv	5183	3997	60	351	775	775	-
Razgrad	576	487	-	67	22	22	-
Rousse	1636	1016	-	485	135	135	-
Silistra	567	520	-	22	25	25	-
Sliven	1282	1172	-	25	85	85	-
Smoljan	838	617	18	50	153	153	-
Sofia-capital	9341	7311	253	556	1221	1192	29
Sofia	1750	1403	55	60	232	232	-
St. Zagora	2880	1889	99	595	297	271	26
Targovishte	714	614	-	100	-	-	-
Haskovo	1265	1144	-	101	20	20	-
Shoumen	932	700	-	210	22	22	-
Yambol	554	521	-	33	-	-	-

¹⁾ Beds belonging to other administrations are not included.

²⁾ Hospital beds of other administrations included, but not allocated by type.

14. Beds¹⁾ in Hospitals and Prophylactic centers on 31.XII.2009 by Type²⁾

(continued from previous)

<i>Regions</i>	<i>Total</i>	<i>Beds for active and intensive care</i>	<i>Beds for continuing care</i>	<i>Psychiatric beds</i>	<i>Other beds</i>	<i>incl:</i>	
						<i>physiotherapeutic and rehabilitation</i>	<i>day care</i>
Per 10 000 population							
Total	63.5	48.2	1.2	6.8	7.3	7.2	0.1
Blagoevgrad	53.0	36.7	-	4.1	12.2	12.0	0.2
Bourgas	54.0	31.2	0.5	6.3	16.0	15.4	0.6
Varna	48.7	41.5	-	3.3	3.9	3.7	0.2
V. Tarnovo	68.4	51.4	0.1	8.5	8.4	8.4	-
Vidin	43.5	40.8	-	2.7	-	-	-
Vratza	72.5	55.4	6.7	7.1	3.3	3.3	-
Gabrovo	71.5	57.2	2.8	10.0	1.5	1.5	-
Dobrich	49.8	32.9	-	12.3	4.6	4.6	-
Kardgali	62.4	41.7	-	20.7	-	-	-
Kjustendil	82.4	54.5	-	2.1	25.8	25.8	-
Lovetch	83.6	47.0	-	35.1	1.5	1.5	-
Montana	61.6	48.6	-	3.1	9.9	9.9	-
Pazardgik	64.1	49.7	3.8	4.5	6.1	6.1	-
Pernik	44.2	33.6	5.5	1.8	3.3	3.3	-
Pleven	56.3	50.4	0.3	3.6	2.0	2.0	-
Plovdiv	73.9	57.0	0.9	5.0	11.0	11.0	-
Razgrad	43.4	36.7	-	5.0	1.7	1.7	-
Rousse	65.7	40.8	-	19.5	5.4	5.4	-
Silistra	44.4	40.7	-	1.7	2.0	2.0	-
Sliven	62.6	57.2	-	1.2	4.2	4.2	-
Smoljan	67.2	49.4	1.5	4.0	12.3	12.3	-
Sofia-capital	74.7	58.5	2.0	4.4	9.8	9.6	0.2
Sofia	69.2	56.4	2.2	2.4	9.2	9.2	-
St. Zagora	82.1	53.8	2.8	17.0	8.5	7.7	0.8
Targovishte	55.1	47.4	-	7.7	-	-	-
Haskovo	49.3	44.6	-	3.9	0.8	0.8	-
Shoumen	48.0	36.1	-	10.8	1.1	1.1	-
Yambol	40.0	37.6	-	2.4	-	-	-

¹⁾ Beds belonging to other administrations are not included.

²⁾ Hospital beds of other administrations included, but not allocated by type.

15. Medical Personnel in Health Facilities on 31.XII.2009

Regions	Physicians	Dentists	Auxiliary medical personnel	Incl.:		
				Med.assist.	Midwives	Nurses
Number						
Total¹⁾	27988	6493	48099	2534	3289	31961
Blagoevgrad	872	252	1655	120	86	1207
Bourgas	1101	272	2052	135	135	1358
Varna	2202	426	3025	64	310	1895
V. Tarnovo	831	209	1595	131	72	1109
Vidin	364	108	628	98	52	355
Vratza	697	115	1312	104	83	866
Gabrovo	463	109	922	78	51	593
Dobrich	540	112	1031	61	77	689
Kardgali	402	115	890	85	80	592
Kjustendil	493	126	842	63	44	575
Lovetch	578	120	954	80	53	658
Montana	471	92	853	107	56	537
Pazardgik	814	224	1346	86	102	872
Pernik	372	136	602	26	32	414
Pleven	1305	182	2155	105	147	1449
Plovdiv	2916	936	4708	43	259	3152
Razgrad	314	65	712	65	33	466
Rousse	734	162	1463	138	105	920
Silistra	319	69	694	67	57	453
Sliven	581	137	1031	97	49	664
Smoljan	358	118	841	77	52	563
Sofia-capital	5668	1479	8802	49	752	5844
Sofia	926	137	1599	91	112	1061
St. Zagora	1427	283	2443	102	155	1717
Targovishte	394	62	782	58	51	515
Haskovo	717	202	1396	123	124	908
Shoumen	574	105	1183	88	75	813
Yambol	371	103	776	79	45	495

¹⁾ Personnel belonging to other administrations are included, but not allocated by regions.

15. Medical Personnel in Health Facilities on 31.XII.2009

(continued from previous)

Regions	Physicians	Dentists	Auxiliary medical personnel	Incl.:		
				Med.assist.	Midwives	Nurses
Per 10000 population						
Total¹⁾	37.0	8.6	63.6	3.4	4.3	42.3
Blagoevgrad	26.6	7.7	50.5	3.7	2.6	36.8
Bourgas	26.1	6.4	48.6	3.2	3.2	32.2
Varna	47.3	9.2	65.0	1.4	6.7	40.7
V. Tarnovo	30.2	7.6	57.9	4.8	2.6	40.3
Vidin	33.7	10.0	58.1	9.1	4.8	32.8
Vratza	35.4	5.8	66.7	5.3	4.2	44.0
Gabrovo	35.6	8.4	70.9	6.0	3.9	45.6
Dobrich	27.0	5.6	51.6	3.1	3.9	34.5
Kardgali	26.0	7.4	57.5	5.5	5.2	38.3
Kjustendil	33.9	8.7	57.8	4.3	3.0	39.5
Lovetch	38.2	7.9	63.1	5.3	3.5	43.5
Montana	30.2	5.9	54.7	6.9	3.6	34.4
Pazardgik	28.0	7.7	46.3	3.0	3.5	30.0
Pernik	27.3	10.0	44.2	1.9	2.3	30.4
Pleven	44.9	6.3	74.2	3.6	5.1	49.9
Plovdiv	41.6	13.3	67.1	0.6	3.7	44.9
Razgrad	23.7	4.9	53.6	4.9	2.5	35.1
Rousse	29.5	6.5	58.7	5.5	4.2	36.9
Silistra	25.0	5.4	54.4	5.2	4.5	35.5
Sliven	28.4	6.7	50.3	4.7	2.4	32.4
Smoljan	28.7	9.5	67.4	6.2	4.2	45.1
Sofia-capital	45.4	11.8	70.4	0.4	6.0	46.8
Sofia	36.6	5.4	63.2	3.6	4.4	41.9
St. Zagora	40.7	8.1	69.6	2.9	4.4	48.9
Targovishte	30.4	4.8	60.3	4.5	3.9	39.7
Haskovo	28.0	7.9	54.4	4.8	4.8	35.4
Shoumen	29.6	5.4	61.0	4.5	3.9	41.9
Yambol	26.8	7.4	56.1	5.7	3.3	35.8

¹⁾ Personnel belonging to other administrations are included, but not allocated by regions.

16. Persons Served¹⁾ by the Centers for Urgent Medical Care, Urgent Wards and Urgent Portals in 2009

(number)

Regions	Total	Centers for urgent medical care		Urgent wards	Urgent portals
		Total	incl.: at calls performed		
Total	2538420	1355735	727635	827747	354938
Blagoevgrad	100452	80174	27844	20278	-
Bourgas	112506	74305	40536	38201	-
Varna	128966	63051	41707	65915	-
V. Tarnovo	78621	58004	20345	20617	-
Vidin	52786	19707	12746	33079	-
Vratza	61072	31166	16389	29906	-
Gabrovo	44347	24485	13963	19862	-
Dobrich	79409	30225	16070	49184	-
Kardgali	75482	44613	14092	30869	-
Kjustendil	77568	52376	22709	25192	-
Lovetch	64722	38011	14518	26711	-
Montana	57004	33780	17038	23224	-
Pazardgik	84249	53414	26055	30835	-
Pernik	63274	34228	21280	29046	-
Pleven	71688	51838	26480	19850	-
Plovdiv	219724	96212	72099	123512	-
Razgrad	38871	20219	10317	18652	-
Rousse	66752	29488	18664	37264	-
Silistra	45916	27799	11920	18117	-
Sliven	44535	25828	17840	18707	-
Smoljan	43781	33386	26213	10395	-
Sofia-capital	476596	111134	107474	12545	352917
Sofia	112371	85122	17257	25228	2021
St. Zagora	84408	66350	27509	18058	-
Targovishte	44676	22147	13583	22529	-
Haskovo	87901	69752	26581	18149	-
Shoumen	65332	42807	23686	22525	-
Yambol	55411	36114	22720	19297	-

¹⁾ excl. ambulance transportation

17. Childbirth care at inpatient healthcare facilities during 2009

Regions	Women in childbirth served	Newborns live births			
		number	per 100 live births	incl. premature	
				number	per 100 deaths
Total	75056	310	0.4	251	81.0
Blagoevgrad	2855	3	0.1	2	66.7
Bourgas	3667	34	0.9	31	91.2
Varna	6128	23	0.4	18	78.3
V. Tarnovo	1937	9	0.5	8	88.9
Vidin	746	3	0.4	3	100.0
Vratza	1395	2	0.1	2	100.0
Gabrovo	878	2	0.2	2	100.0
Dobrich	1841	10	0.5	8	80.0
Kardgali	1495	6	0.4	5	83.3
Kjustendil	1058	-	-	-	-
Lovetch	1217	2	0.2	2	100.0
Montana	1366	6	0.4	4	66.7
Pazardgik	3016	11	0.4	11	100.0
Pernik	774	2	0.3	2	-
Pleven	2887	11	0.4	10	90.9
Plovdiv	7839	51	0.6	36	70.6
Razgrad	840	2	0.2	2	100.0
Rousse	2002	7	0.3	6	85.7
Silistra	1276	2	0.2	2	100.0
Sliven	3817	19	0.5	15	78.9
Smoljan	945	3	0.3	3	100.0
Sofia-capital	15396	50	0.3	45	90.0
Sofia	1994	2	0.1	1	50.0
St. Zagora	3507	12	0.3	9	75.0
Targovishte	1392	5	0.4	4	80.0
Haskovo	2077	11	0.5	9	81.8
Shoumen	1829	17	0.9	9	52.9
Yambol	882	5	0.6	2	40.0

18. Surgical Patients, Discharged from Hospitals in 2009

<i>Regions</i>	<i>Discharged surgical patients</i>	<i>Surgical patients with complications (percentage)</i>	<i>Lethality (percentage)</i>
Total	522832	0.4	0.7
Blagoevgrad	15169	1.0	0.5
Bourgas	15885	0.1	0.6
Varna	34333	0.2	1.0
V. Tarnovo	10603	0.6	1.0
Vidin	3616	0.1	1.1
Vratza	13900	0.2	0.6
Gabrovo	9488	1.0	0.9
Dobrich	8088	0.7	0.8
Kardgali	7746	0.1	0.5
Kjustendil	7273	0.9	0.4
Lovetch	8425	0.3	0.4
Montana	9037	0.8	0.9
Pazardgik	20411	0.1	0.2
Pernik	4532	0.4	0.9
Pleven	19913	0.0	0.3
Plovdiv	71681	0.2	0.5
Razgrad	6018	0.0	0.2
Rousse	17585	0.0	0.6
Silistra	5666	0.8	0.5
Sliven	14977	-	0.5
Smoljan	6359	0.6	0.3
Sofia-capital	136501	0.5	0.8
Sofia	17646	0.9	1.0
St. Zagora	21607	0.1	0.8
Targovishte	10385	1.0	0.3
Haskovo	10868	0.0	0.5
Shoumen	9286	0.8	0.7
Yambol	5834	0.3	0.4

VIII. INTERNATIONAL REVIEW

1. Birth Rate, Death Rate and Natural Growth

(per 1000 population)

Countries	Year	Birth rate	Death rate	Natural growth	Countries	Year	Birth rate	Death rate	Natural growth
Austria	1980	12.0	12.2	-0.2	Norway	1980	12.5	10.1	2.4
	1990	11.7	10.7	1.0		1990	14.4	10.9	3.5
	1995	11.0	10.1	0.9		1995	13.8	10.4	3.5
	2000	9.7	9.6	0.3		2000	13.2	9.8	3.4
	2005	9.5	9.1	0.4		2005	12.3	8.9	3.4
	2006	9.4	9.0	0.4		2006	12.6	8.8	3.8
	2007	9.2	9.0	0.2		2007	12.4	8.9	3.5
	2008	9.3	9.0	0.3		Poland	1980	19.5	9.8
Belgium	1980	12.6	11.5	1.1	1990		14.3	10.2	4.1
	1990	12.4	10.5	1.9	1995		11.2	10.0	1.2
	1995	11.4	10.5	1.0	2000		9.8	9.5	0.3
	2000	11.3	10.2	1.0	2005		9.5	9.6	-0.1
	2005	11.3	2006		9.8	9.7	0.1
	2007	11.4	2007		10.2	9.9	0.3
Bulgaria	1980	14.5	11.1	3.4	2008		10.9
	1990	12.1	12.5	-0.4	Germany	1980
	1995	8.6	13.6	-5.0		1990
	2000	9.0	14.1	-5.1		1995	9.4	10.8	-1.5
	2005	9.2	14.6	-5.4		2000	9.3	10.2	-0.8
	2006	9.6	14.7	-5.1		2005	8.3	10.1	-1.8
	2007	9.8	14.8	-5.0	2006	8.2	10.0	-1.8	
	2008	10.2	14.5	-4.3	Switzerland	1980	11.7	9.4	2.3
	2009	10.7	14.2	-3.5		1990	12.5	9.5	3.0
United Kingdom	1980	13.4	11.7	1.6		1995	11.7	9.0	2.7
	1990	13.9	11.1	2.7		2000	10.9	8.7	2.2
	1995	12.5	10.9	1.5		2005	9.8	8.2	1.6
	2000	11.4	10.2	1.1	2006	9.8	8.1	1.7	
	2005	12.0	9.7	2.3	2007	9.9	8.1	1.8	
	2006	12.4	9.4	3.0	Roumania	1980	18.0	10.4	7.5
	2007	12.7	9.4	3.3		1990	13.6	10.7	2.9
Netherlands	1980	12.8	8.1	4.7		1995	10.4	12.0	-1.6
	1990	13.2	8.6	4.6		2000	10.4	11.4	-1.0
	1995	12.3	8.8	3.5		2005	10.2	12.1	-1.9
	2000	13.0	8.8	4.2		2006	10.2	12.0	-1.8
	2005	11.5	8.4	3.1		2007	10.0	11.7	-1.7
	2006	11.3	8.3	3.0		2008	10.3	11.8	-1.5
	2007	11.1	8.1	3.0					
	2008	11.2	8.2	3.0					

2. Infant Mortality Rate

(per 1000 live births)

Countries	1980	1985	1990	1995	1999	2000	2005	2006	2007	2008	2009
Austria	14.3	11.2	7.8	5.4	4.4	4.8	4.2	3.6	3.7	3.7	
Belgium	12.1	9.8	7.9	6.1	4.9	4.8	...				
Bulgaria	20.2	15.4	14.8	14.8	14.6	13.3	10.4	9.7	9.2	8.6	9.0
United Kingdom	12.1	9.3	7.9	6.2	5.8	5.6	5.1	5.0	4.8		
Germany	5.3	4.5	4.4	3.9	3.8			
Greece	17.9	14.1	9.7	8.1	6.2	6.1	3.8	3.7	3.6	2.7	
Spain	12.3	8.9	7.6	5.5	4.5	3.9	3.8				
Italy	14.6	10.5	8.2	6.1	5.2	4.5	...	3.6	3.5		
Norway	8.1	8.5	6.9	4.0	3.9	3.8	3.1	3.2	3.2		
Poland	21.3	18.5	16.0	13.6	8.9	8.1	6.4	6.0	6.0		
Portugal	24.3	17.8	10.9	7.4	5.6	5.5	...				
Roumania	29.3	25.6	26.9	21.2	18.6	18.6	15.0	13.9	12.0	11.0	
Russia	22.0	20.8	17.6	18.2	16.9	15.5	11.0	10.2			
Hungary	23.2	20.4	14.8	10.7	8.4	9.2	6.2			5.6	
France	10.0	8.3	7.3	4.9	4.3	4.6	3.6	3.6	3.5		
Czech republic	16.9	12.5	10.8	7.7	4.6	4.1	3.4	3.3	3.1	2.8	
Switzerland	9.1	6.9	6.8	5.0	4.6	4.9	4.2	4.4	3.9		

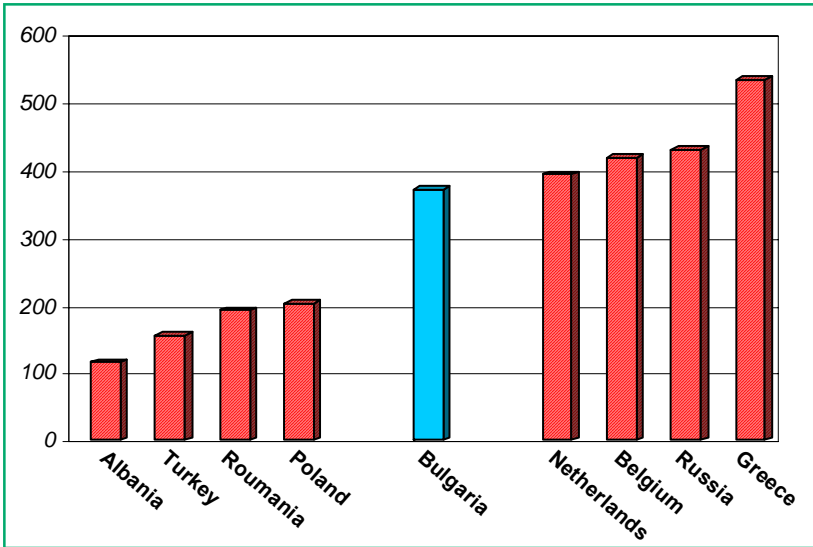
3. Medical Personnel and Hospital Beds

(per 100 000 population)

<i>Countries</i>	<i>Year</i>	<i>Physicians</i>	<i>Year</i>	<i>Dentists</i>	<i>Year</i>	<i>Beds</i>
Albania	2007	115.0	2006	32.9	2007	291.5
Austria	2007	374.9	2007	54.0	2007	776.3
Belgium	2006	418.3	2006	82.6	2007	516.6
Bulgaria	2009	370.0	2009	85.8	2009	606.9
Czech republic	2007	356.6	2007	67.3	2007	810.5
Germany	2007	348.4	2007	76.3	2006	829.1
Denmark	2006	317.0	2006	78.5	2007	349.5
Finland	2007	331.0	2006	85.3	2007	682.5
France	2007	336.1	2007	66.9	2006	716.8
Greece	2006	534.6	2006	127.2	2006	481.7
Hungary	2007	278.0	2007	42.2	2007	712.6
Ireland	2007	302.9	2007	58.5	2006	533.9
Israel	2007	352.6	2007	108.8	2007	583.2
Italy	2006	365.4	2006	62.8	2006	393.9
Luxembourg	2005	290.0	2005	78.5	2004	633.4
Netherlands	2007	393.2	2007	49.5	2007	480.8
Norway	2007	385.3	2007	87.2	2007	396.2
Poland	2006	203.2	2006	32.0	2006	516.2
Portugal	2005	342.6	2005	58.3	2006	345.4
Roumania	2006	192.1	2006	20.2	2006	654.3
Spain	2007	375.7	2007	56.2	2006	337.0
Russia	2006	431.0	2006	32.0	2006	965.8
Switzerland	2006	385.0	2006	51.4	2005	553.9
Sweden	2006	357.8	2006	83.1	1997	522.0
Turkey	2007	154.3	2007	25.9	2007	284.6
United Kingdom	2002	212.6	2001	43.8	2004	389.8
European Union	2007	321.6	2006	59.9	2007	564.8

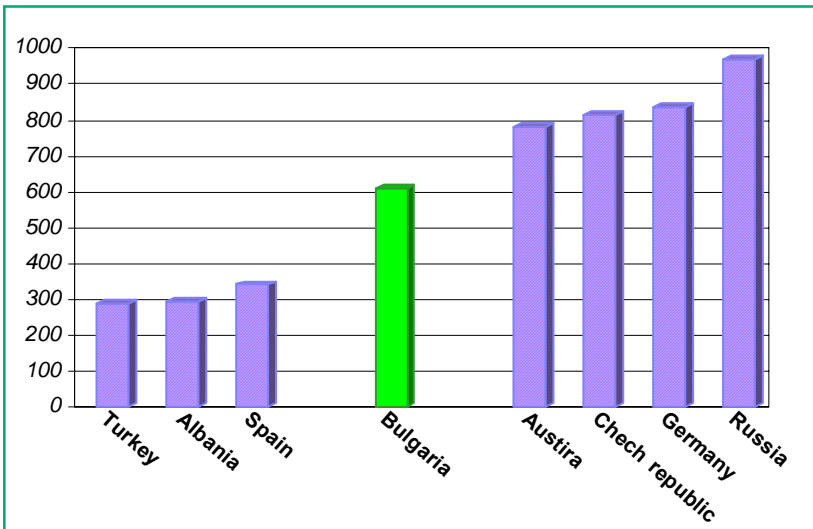
Number of Physicians

(per 100 000 population)



Number of Hospital Beds

(per 100 000 population)





National Center for Health Information

About the National Center for Health Information

The National Center for Health Information will solve your information problems in the field of medicine and healthcare:

- ▶ *It creates and maintains information databases about the health-demographic status of the population, the resources and activities of healthcare.*
- ▶ *It surveys the information needs of medical practice and provides for their documentary insurance.*
- ▶ *It provides medico-statistic information to state bodies.*
- ▶ *It prepares specialized healthcare analyses by request from the relevant organizations.*
- ▶ *It prepares, distributes and introduces information technologies, products and systems.*
- ▶ *It provides tech support and installation and maintains program products.*
- ▶ *It prepares informative and other types of publications for printing.*

Director: Doctor of Economics, assoc. prof. Christian Griva

Office: Sofia 1431, 15 "Akad. Ivan Geshov" blv.
tel.: (+359-2) 951 53 02; fax: (+359-2) 951 52 38
e-mail:office@nchi.government.bg; <http://www.nchi.government.bg>